



**Oregon State**  
University

# Black Rockfish maturity influenced by marine heat waves

Claire Rosemond, Melissa Head, and Scott Heppell



Fisheries in a Changing World  
**Western Groundfish Conference**

April 2023

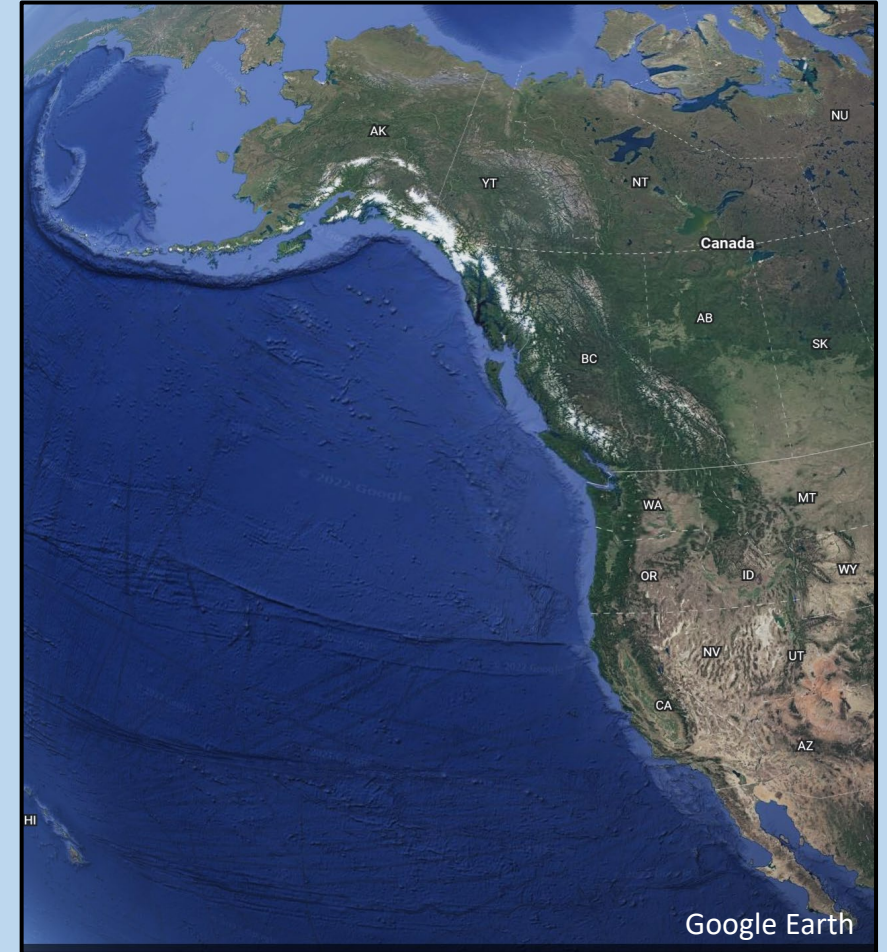
# Black Rockfish (*Sebastes melanops*)



# Dynamic ecosystems



## Distribution

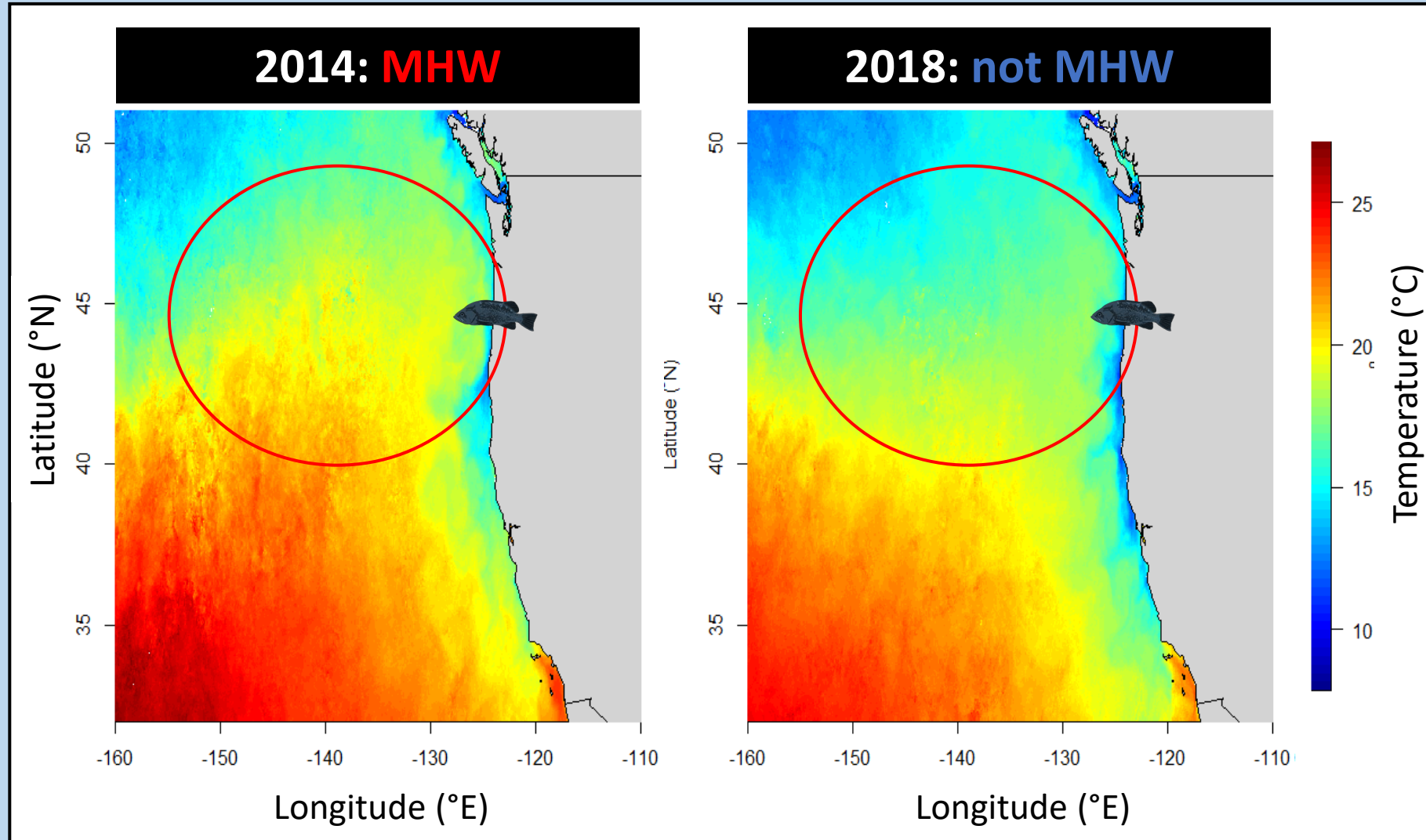


# Marine heat waves

prolonged periods of warmer than normal sea surface temperature

# Marine heat waves

prolonged periods of warmer than normal sea surface temperature



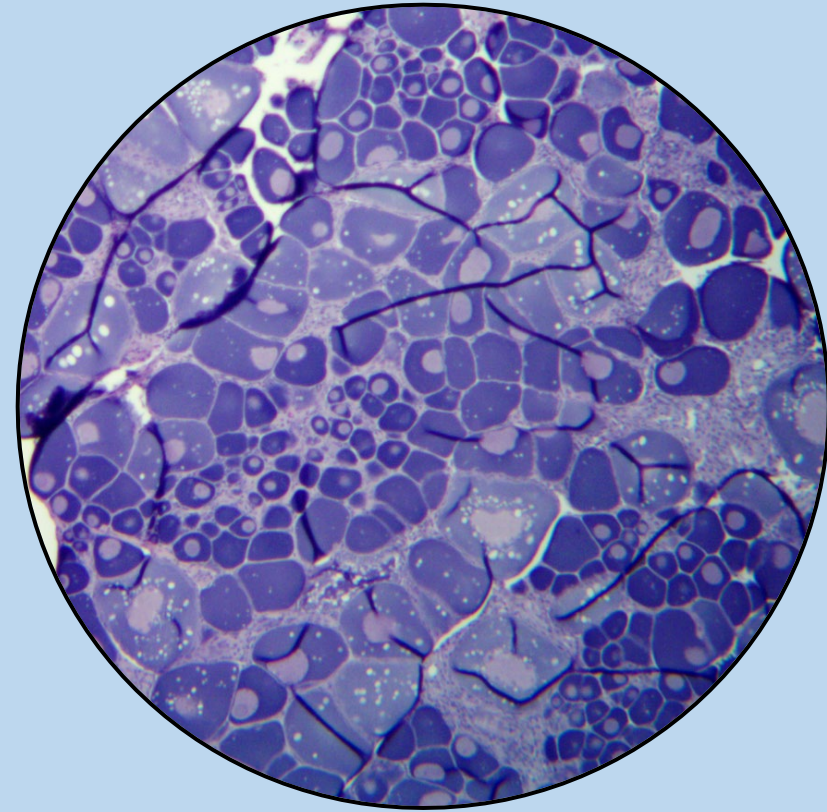
# Research questions

1. How do environmental conditions influence reproductive development?

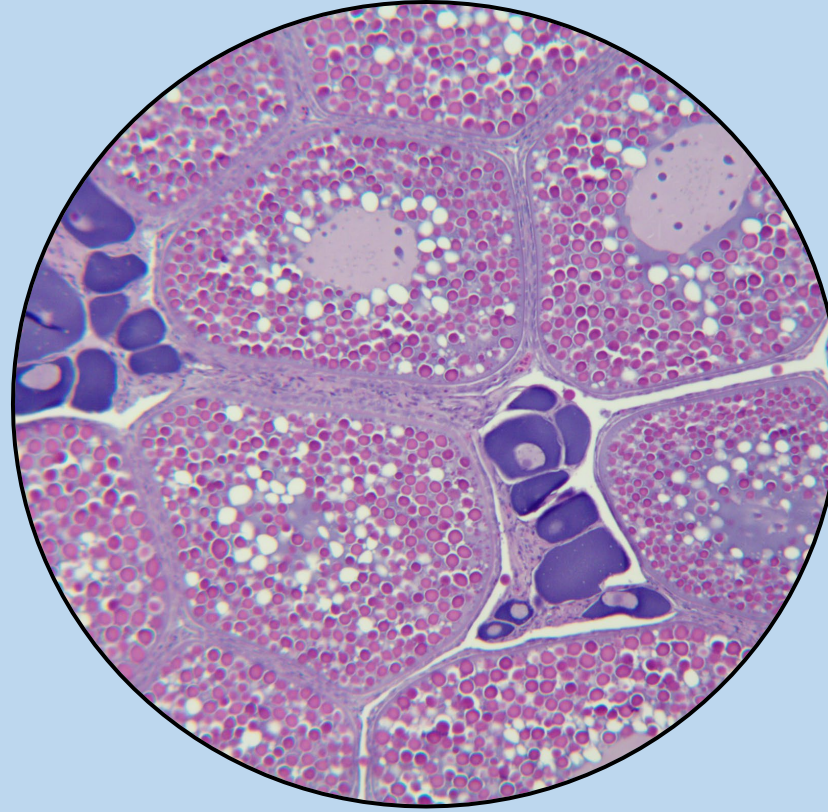
2. How can we incorporate changes in reproductive potential in the stock assessment process?



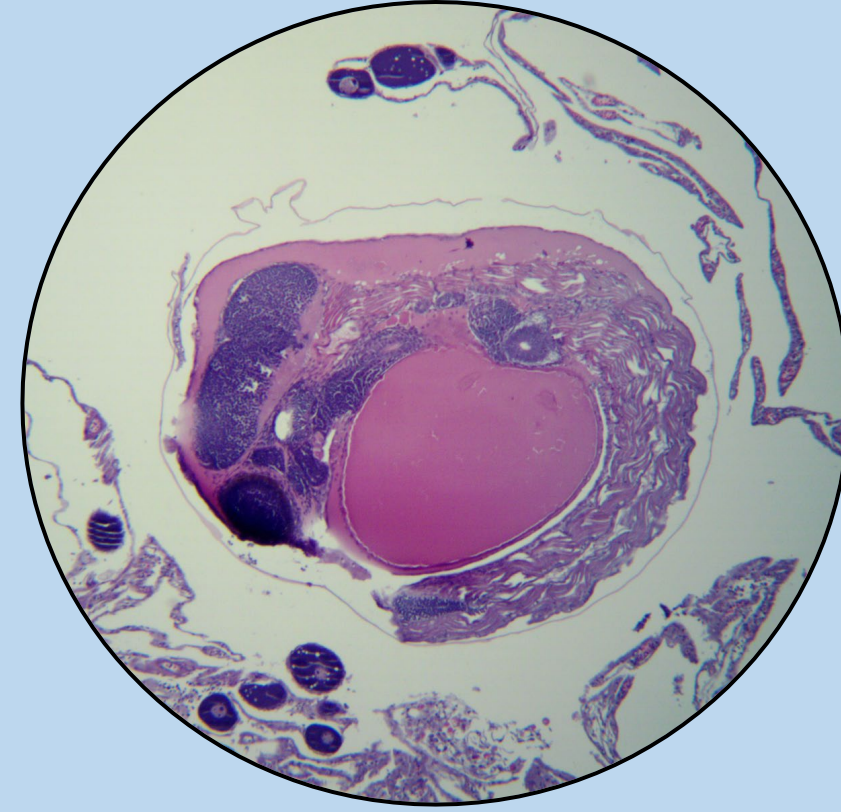
# Reproductive strategy



high fecundity



maternal investment

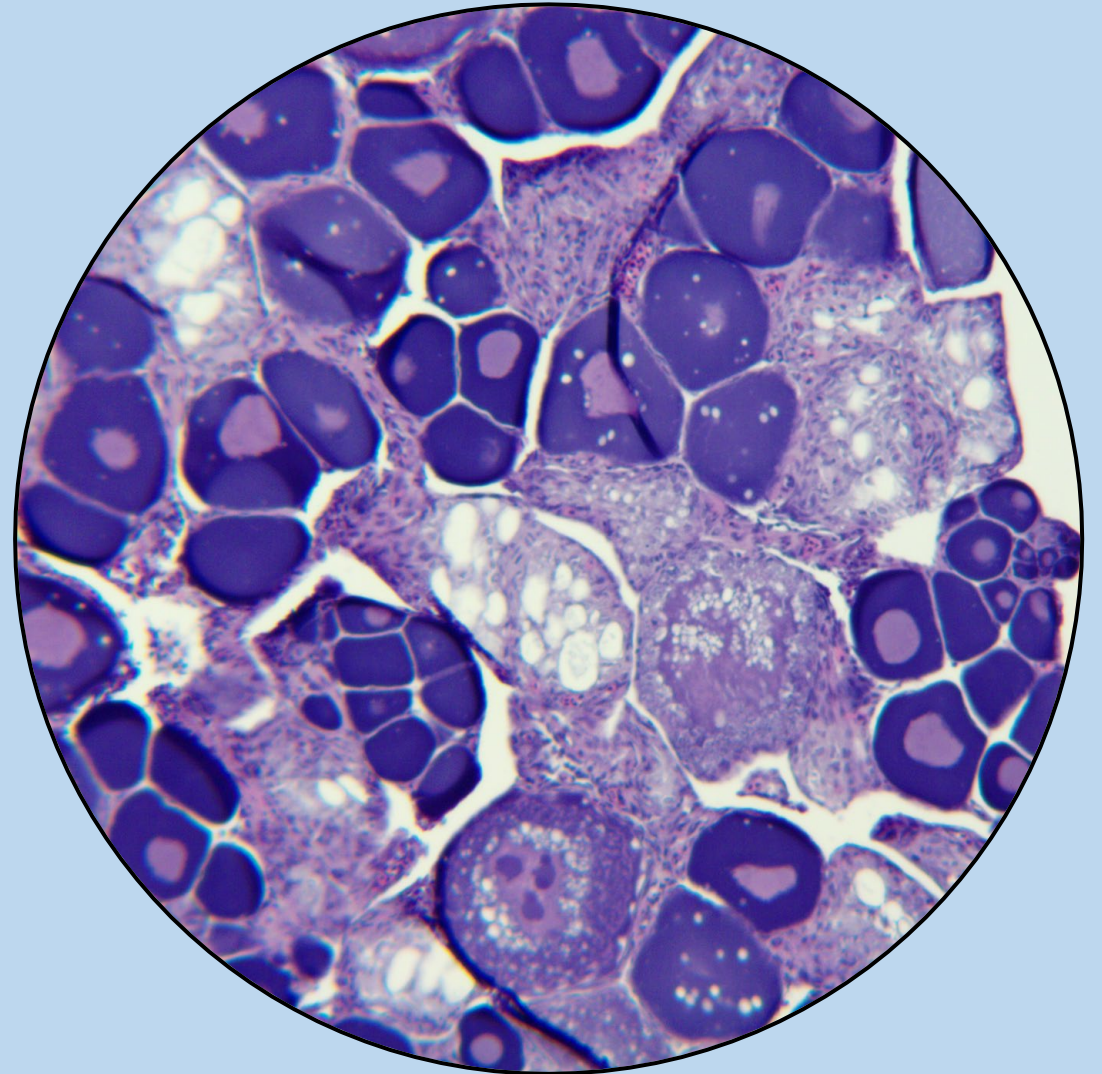


viviparous

# Reproductive strategy

## Atresia

oocyte (future egg) fails  
to develop

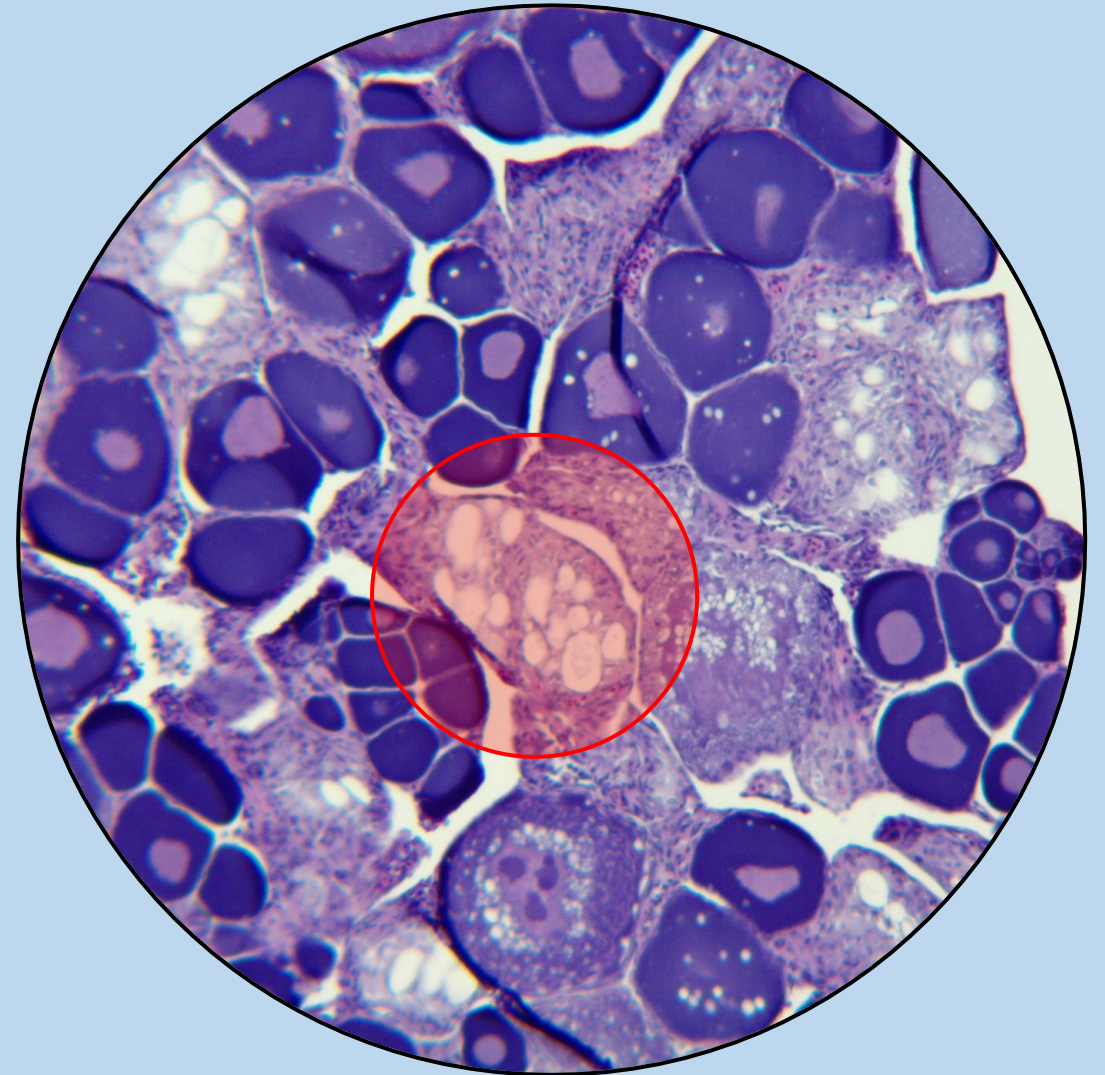




# Reproductive strategy

## Atresia

oocyte (future egg) fails  
to develop



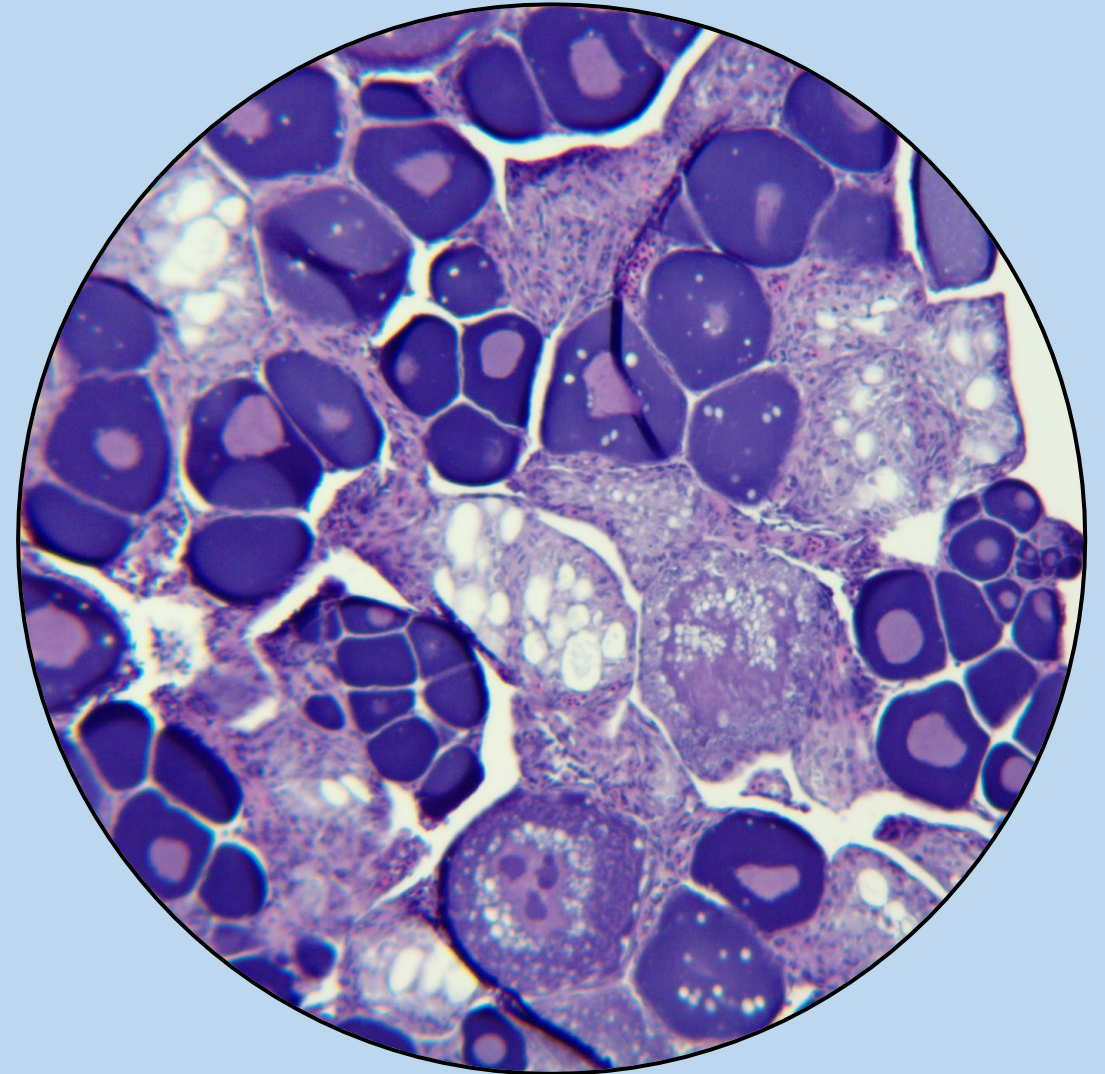
# Reproductive strategy

## Atresia

oocyte (future egg) fails to develop

## Abortive maturation

ramp up development, but reabsorb developing oocytes



# Reproductive strategy

## Atresia

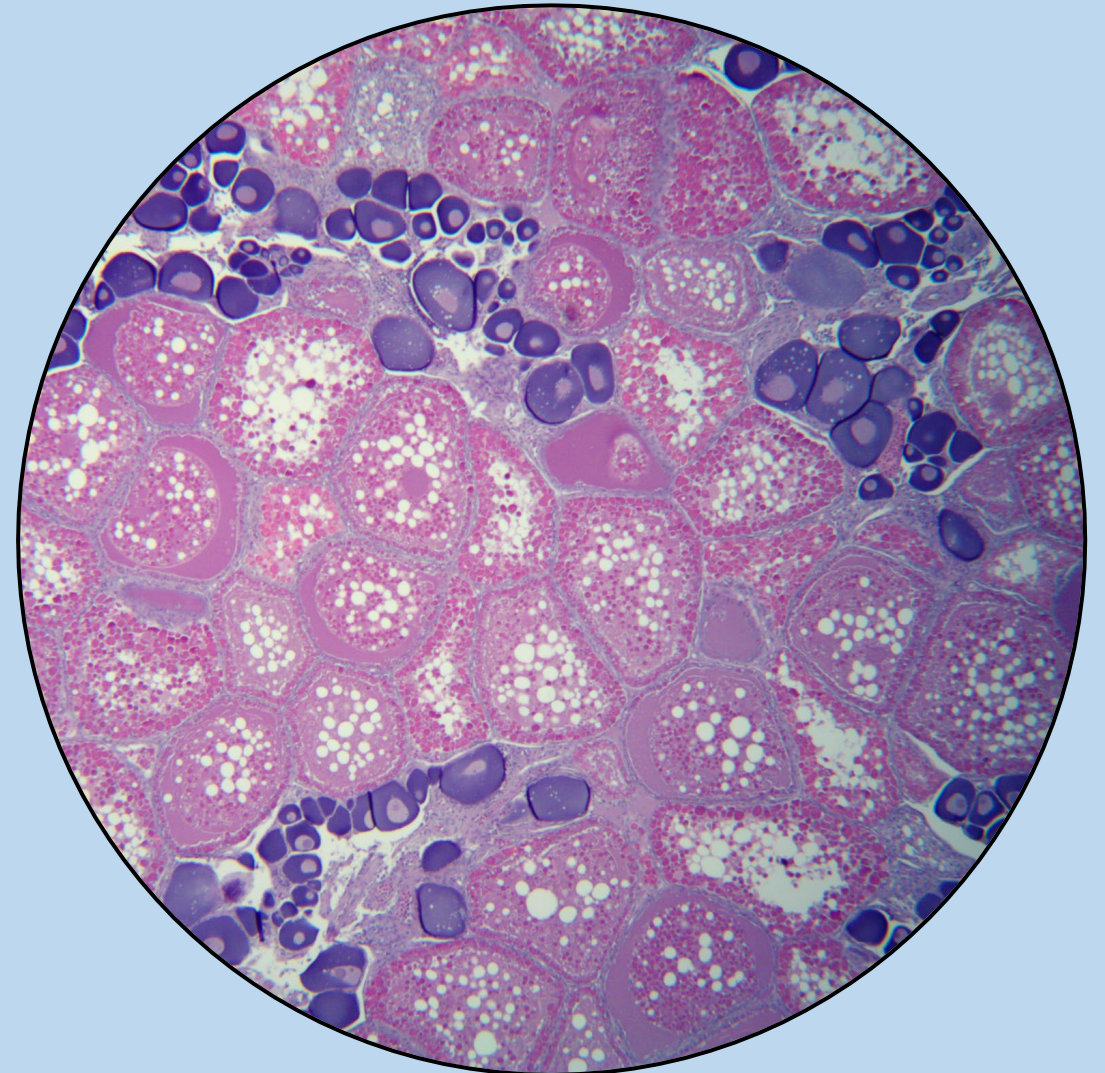
oocyte (future egg) fails to develop

## Abortive maturation

ramp up development, but reabsorb developing oocytes

## Skipped spawning

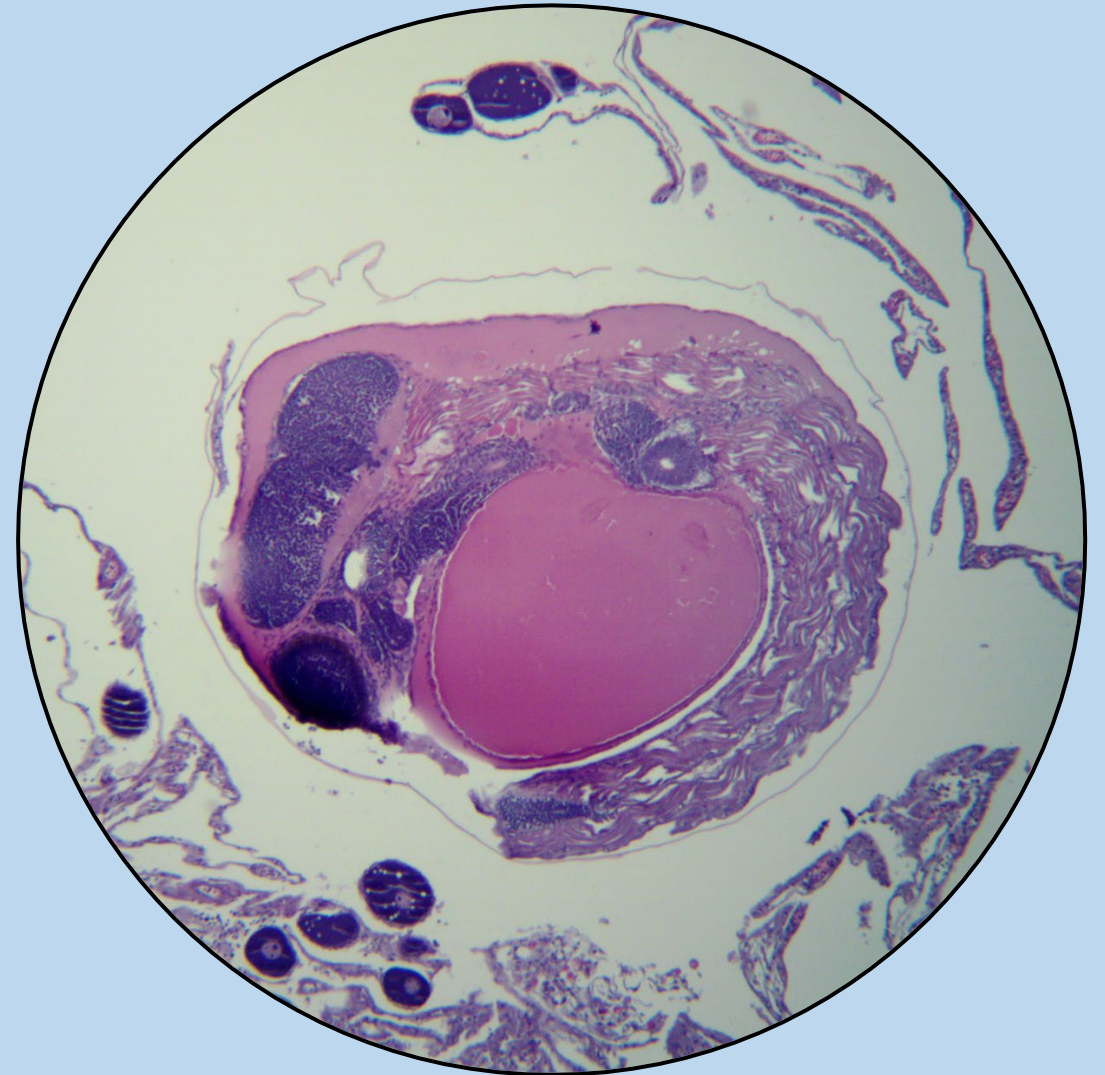
mature fish forgo spawning



# Maturity schedule

*L50*

length at which 50% of females  
in a population reach maturity



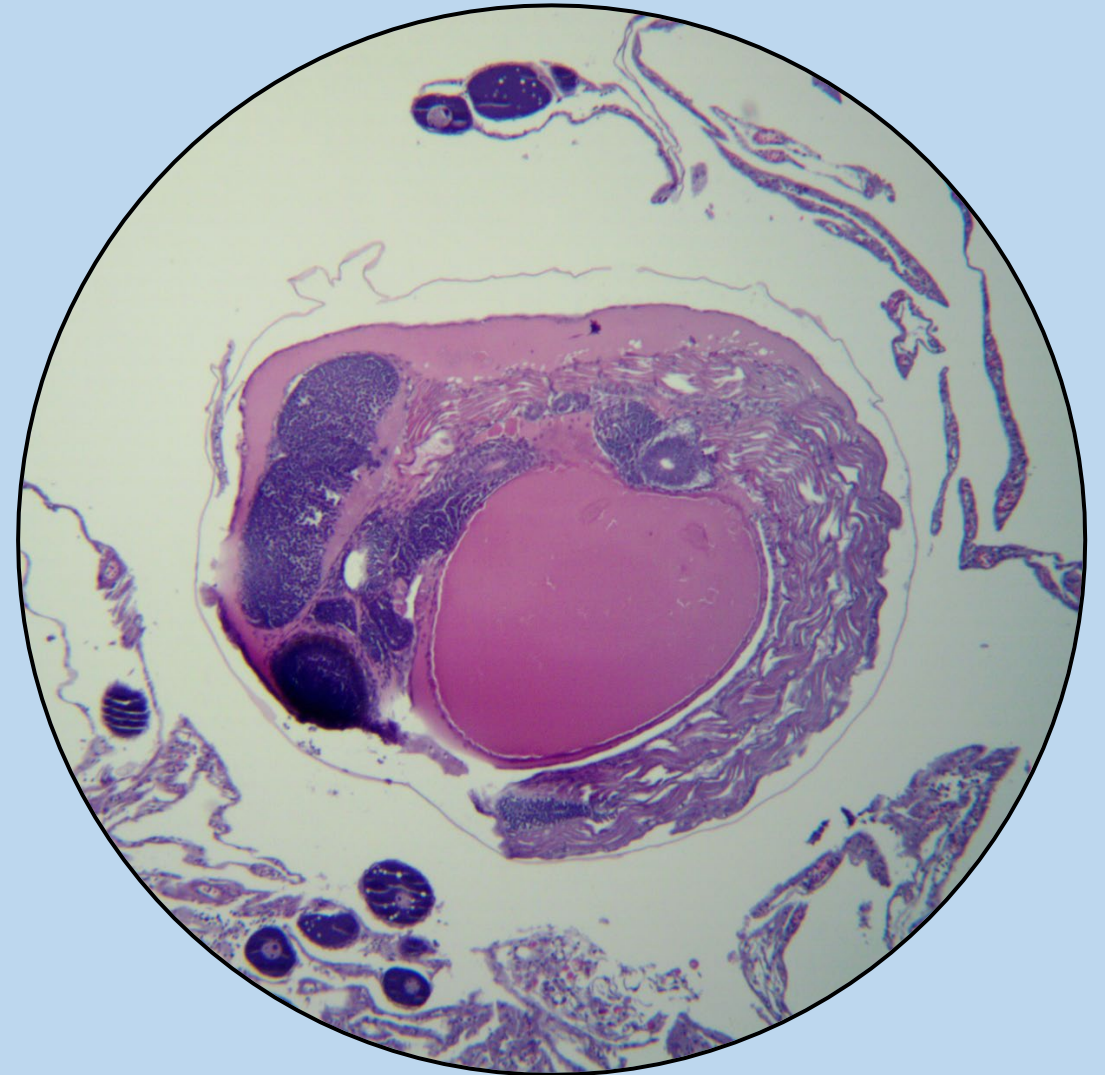
# Maturity schedule

*L50*

length at which 50% of females  
in a population reach maturity

Biological maturity

energy shifts to  
reproductive development



# Maturity schedule

*L50*

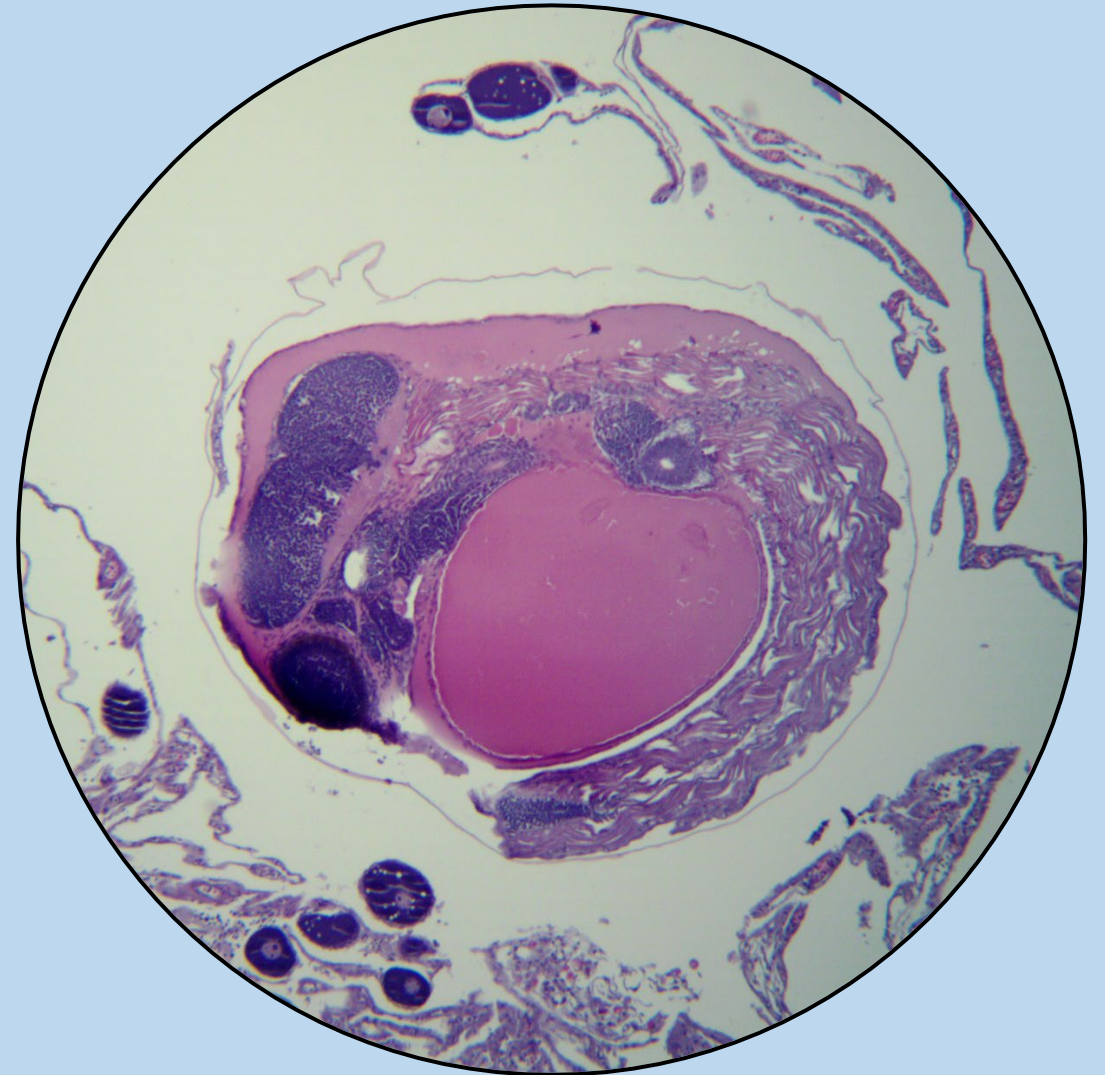
length at which 50% of females in a population reach maturity

Biological maturity

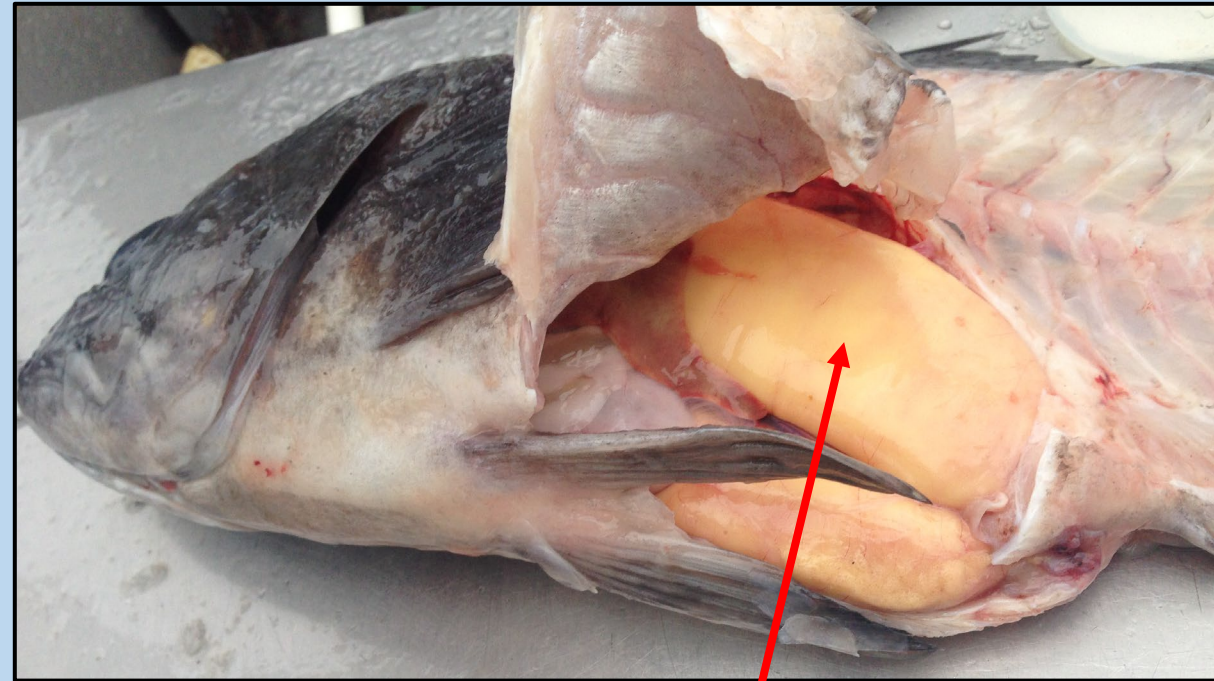
energy shifts to reproductive development

Functional maturity

takes into account abortive maturation and skipped spawning



# Maturity sampling



Ovary

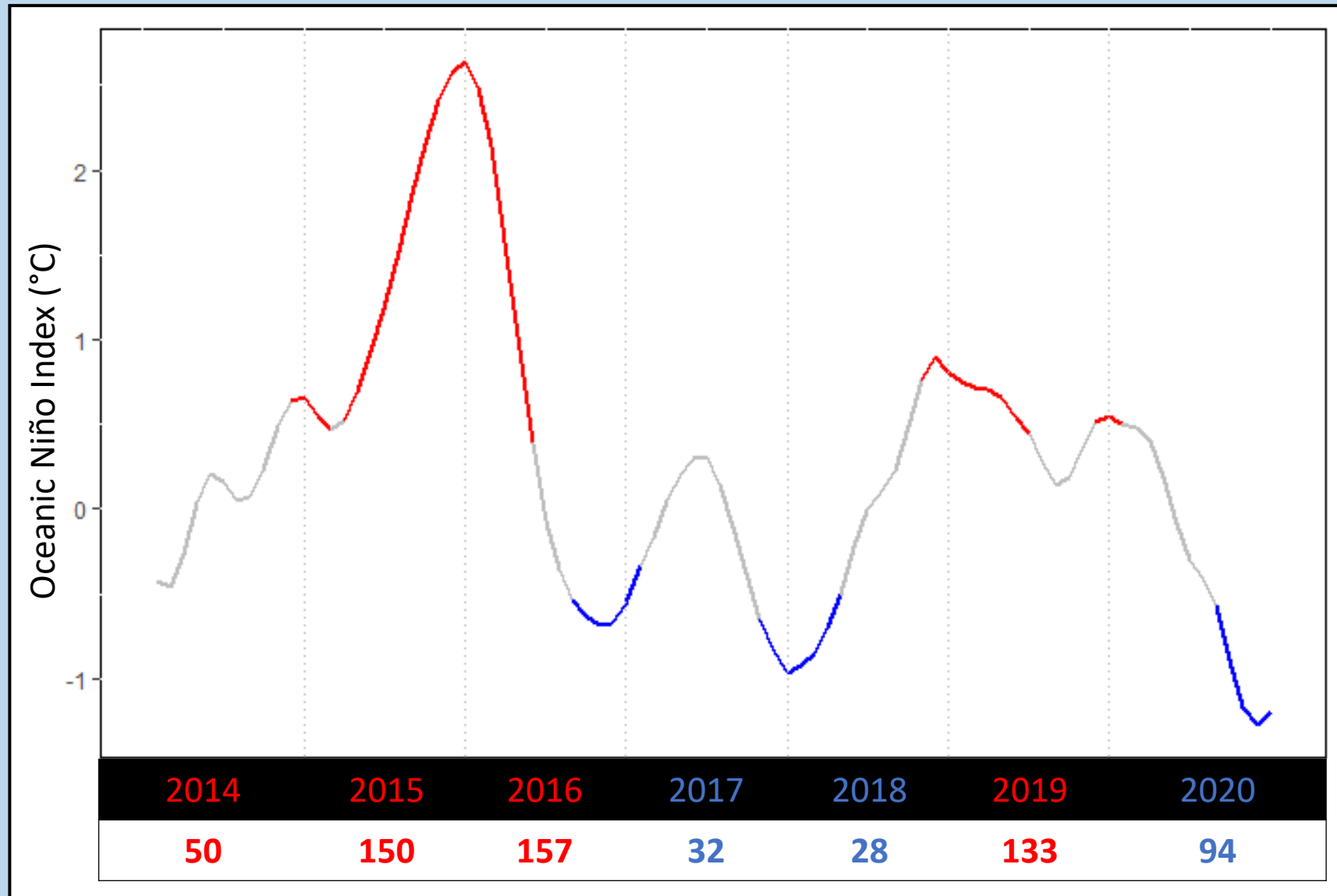
644 samples

# Maturity sampling





# Maturity sampling



# Maturity analysis

Goal: Estimate  $L50$  (biological) and  $L50$  (functional)

# Maturity analysis

Goal: Estimate  $L50$  (biological) and  $L50$  (functional)

Data: Immature (0), mature (1), and atresia

# Maturity analysis

Goal: Estimate  $L50$  (biological) and  $L50$  (functional)

Data: Immature (0), mature (1), and atresia

Models: Standard logistic regression and flexible spline model

# Maturity analysis

Goal: Estimate  $L50$  (biological) and  $L50$  (functional)

Data: Immature (0), mature (1), and atresia

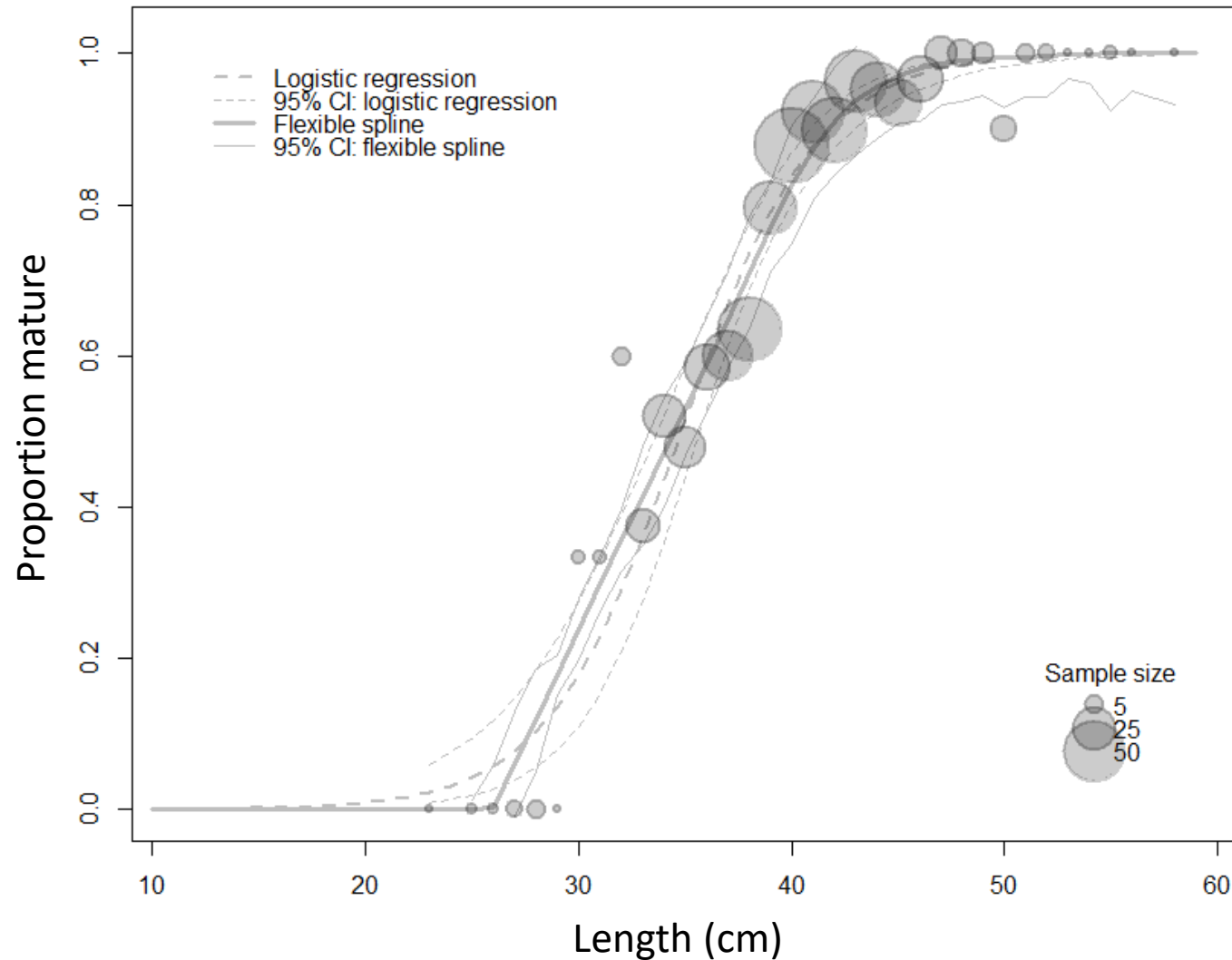
Models: Standard logistic regression and flexible spline model

Goal: Compare  $L50$  estimates in marine heat wave years and non-marine heat wave years

# Results: Length at maturity

# Results: Length at maturity

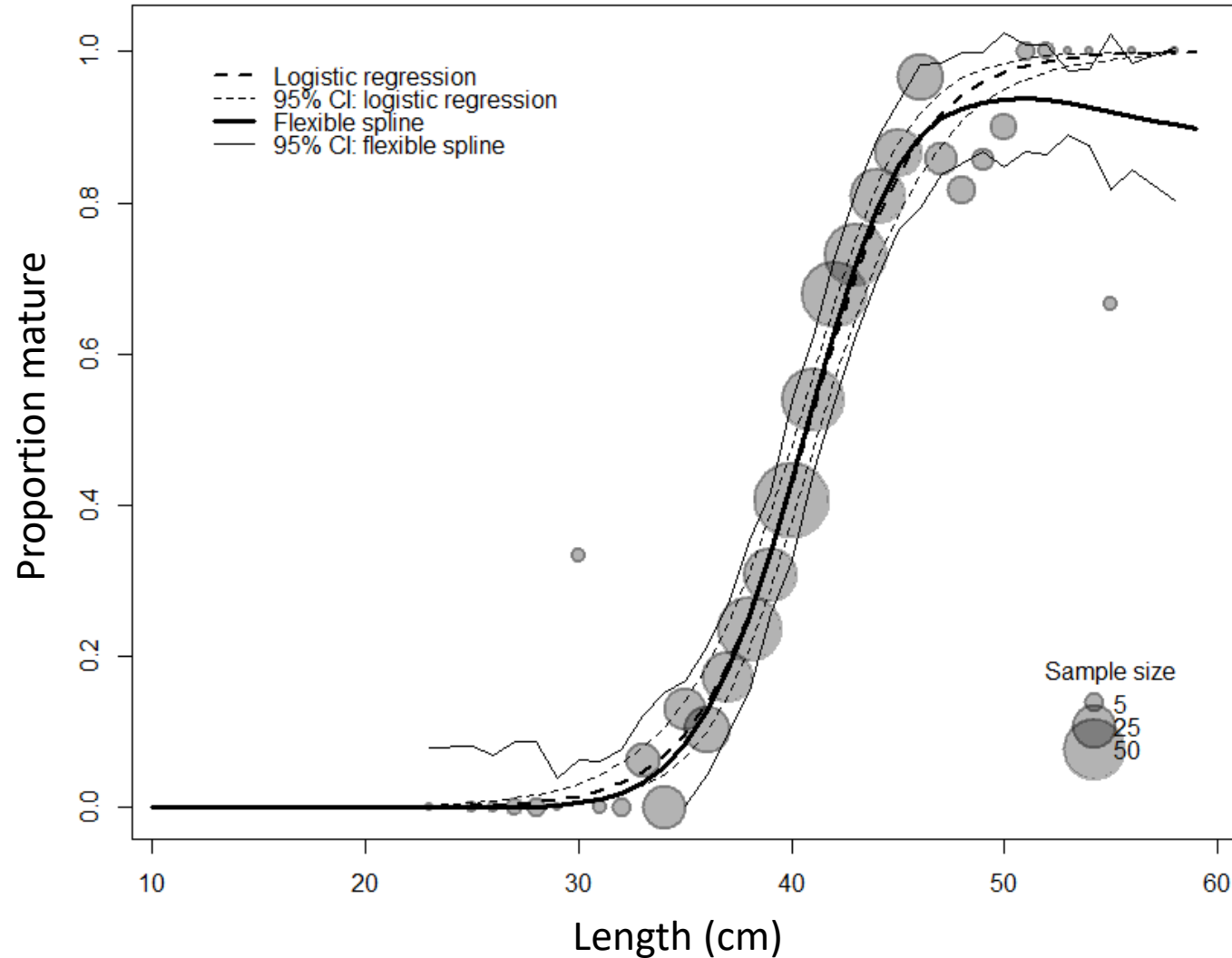
## Biological maturity



$L50 = 34.8 \pm 0.5$  cm

# Results: Length at maturity

## Functional maturity

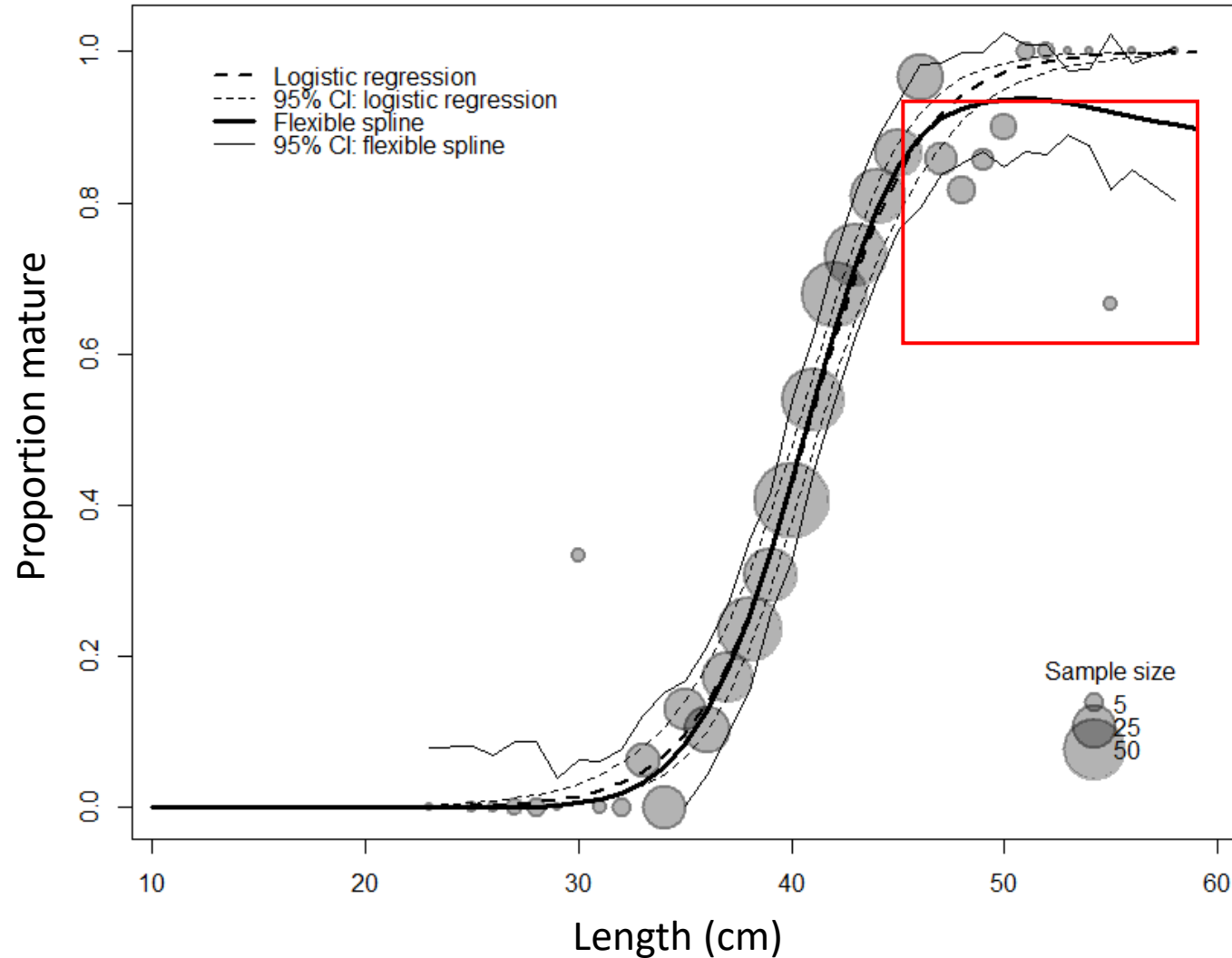


$L50 = 40.7 \pm 0.5$  cm



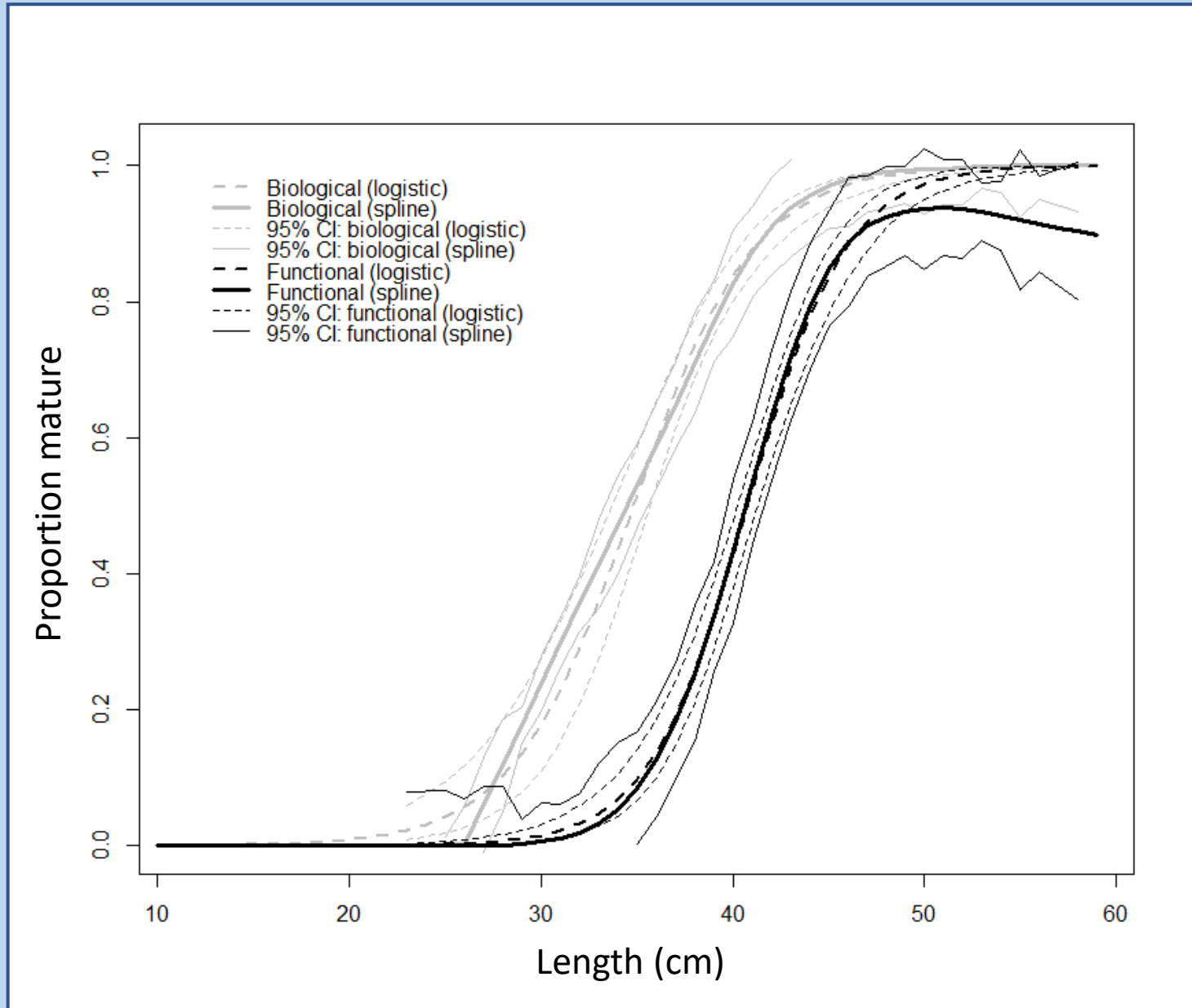
# Results: Length at maturity

## Functional maturity

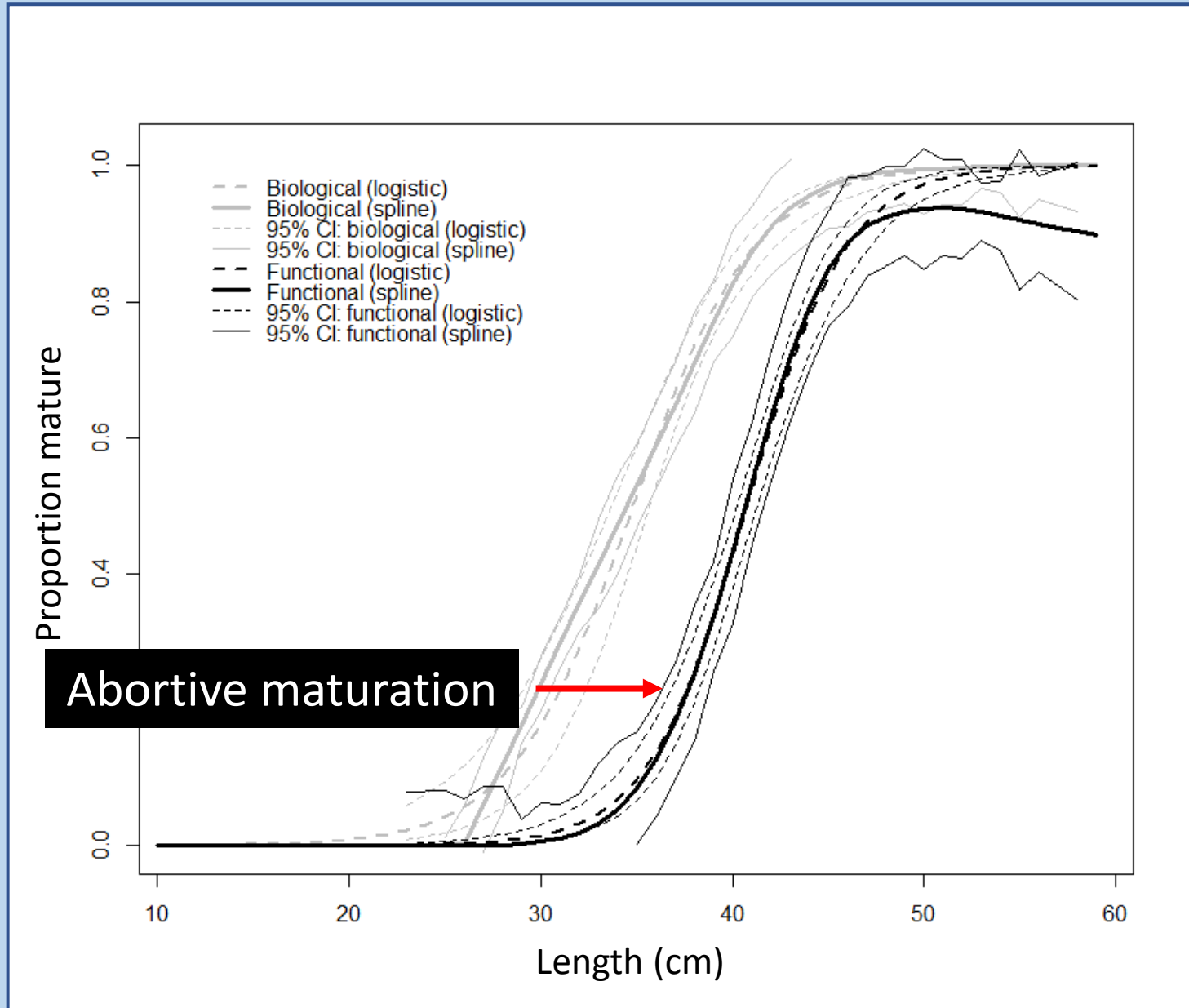


$L50 = 40.7 \pm 0.5$  cm

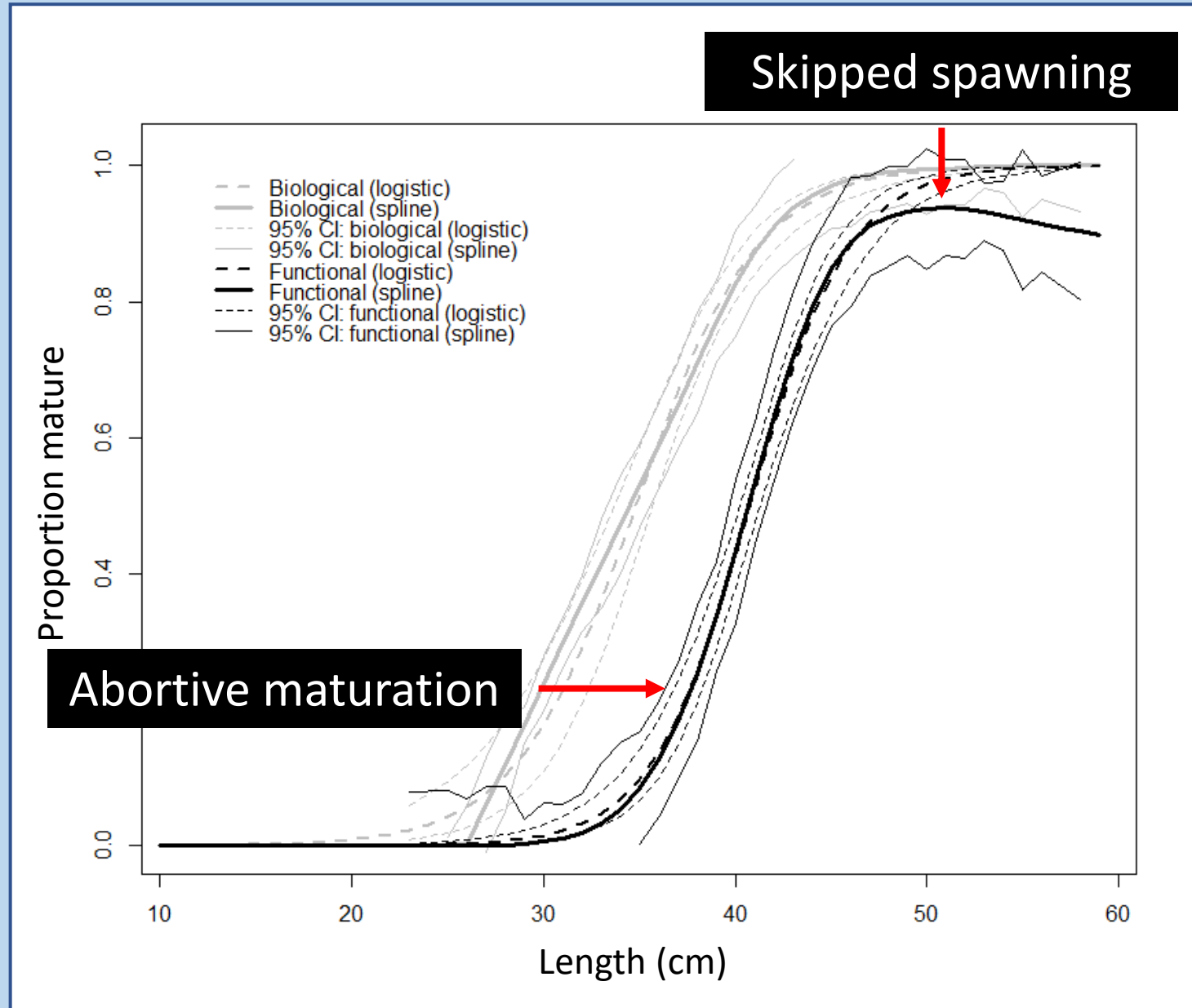
# Results: Length at maturity



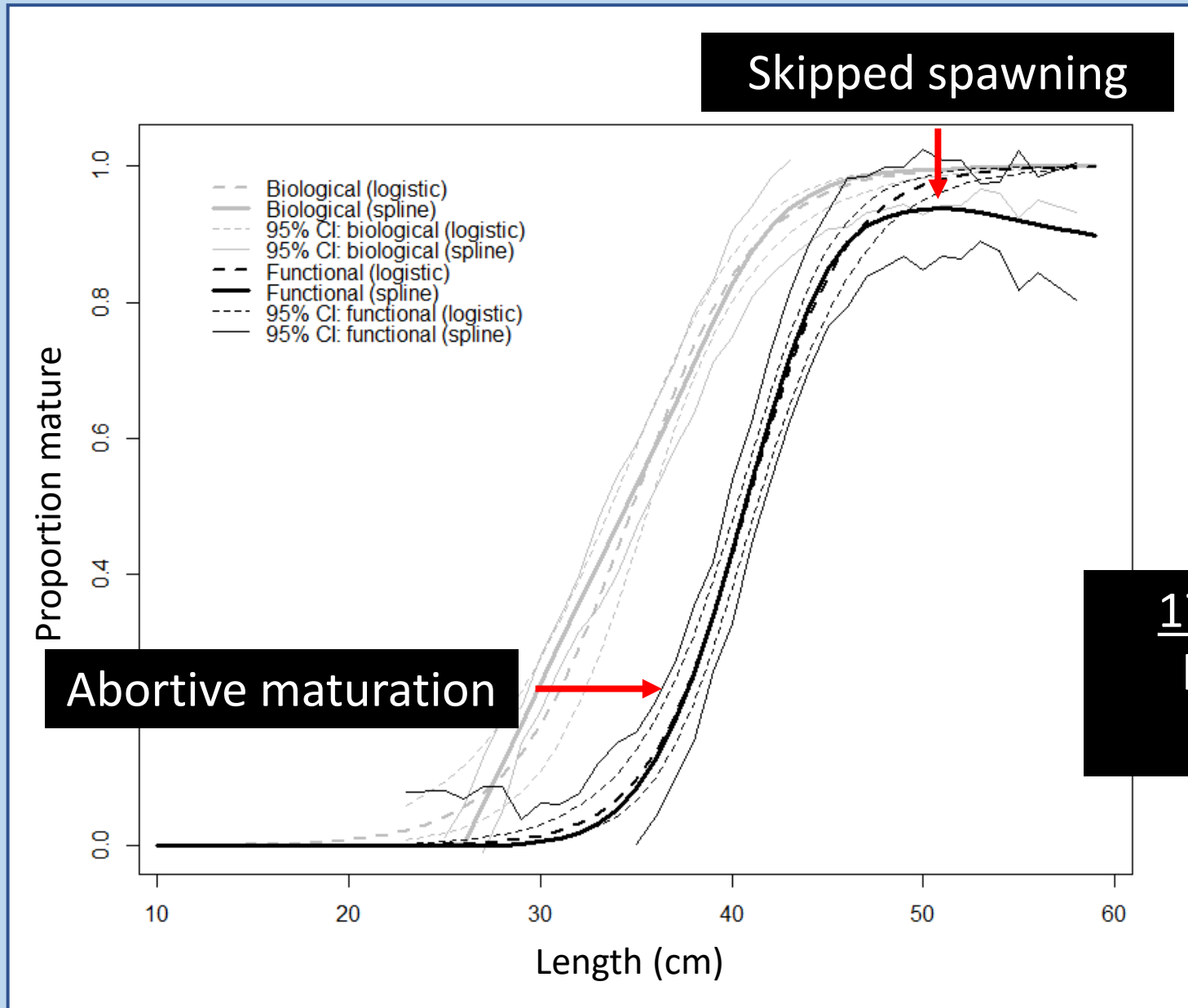
# Results: Length at maturity



# Results: Length at maturity



# Results: Length at maturity



# Results: Marine heat wave impacts

# Results: Marine heat wave impacts

not MHW

MHW

Abortive maturation

50%

Skipped spawning

25%

*L50* (functional)

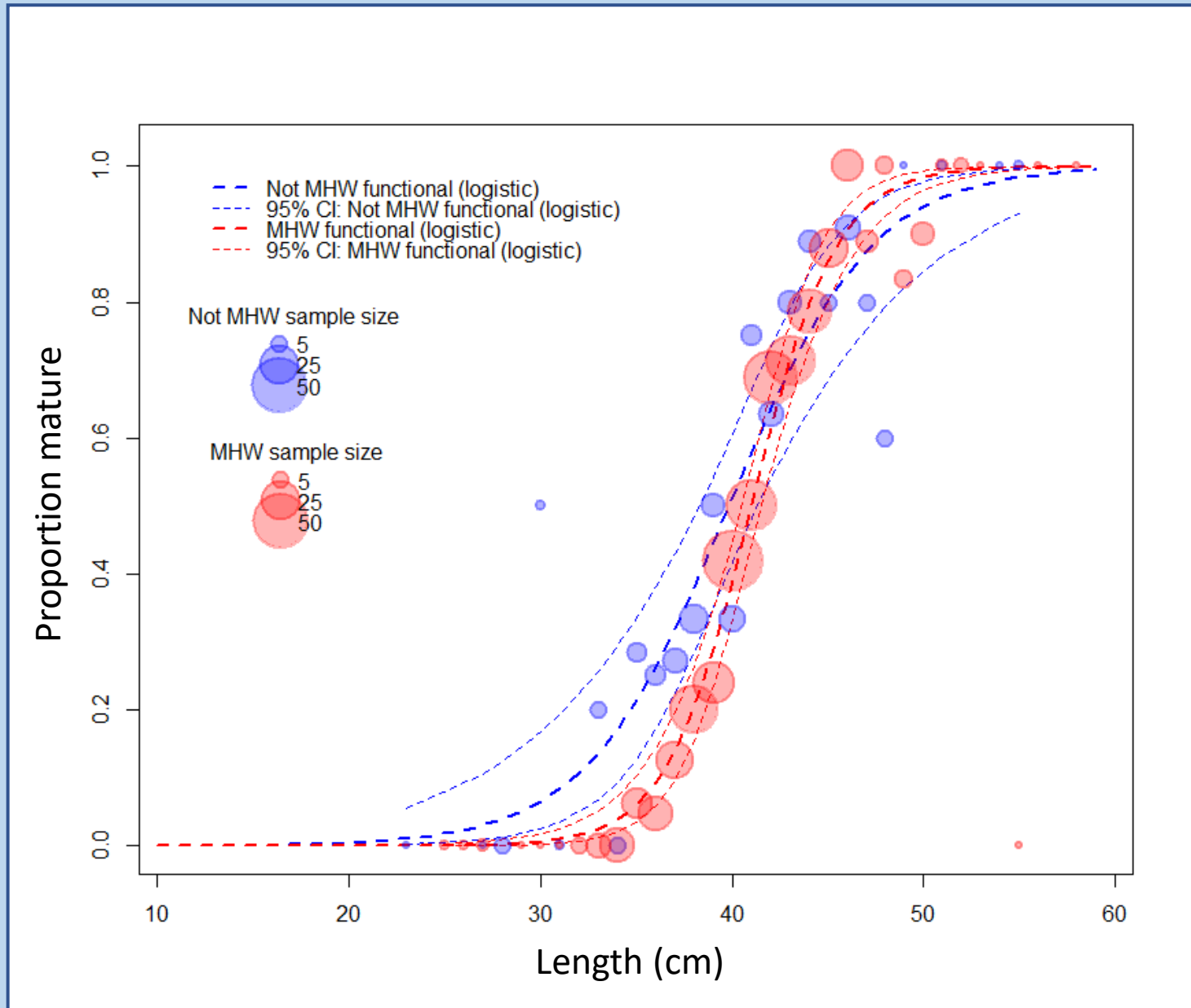
$39.8 \pm 2.0$  cm

# Results: Marine heat wave impacts

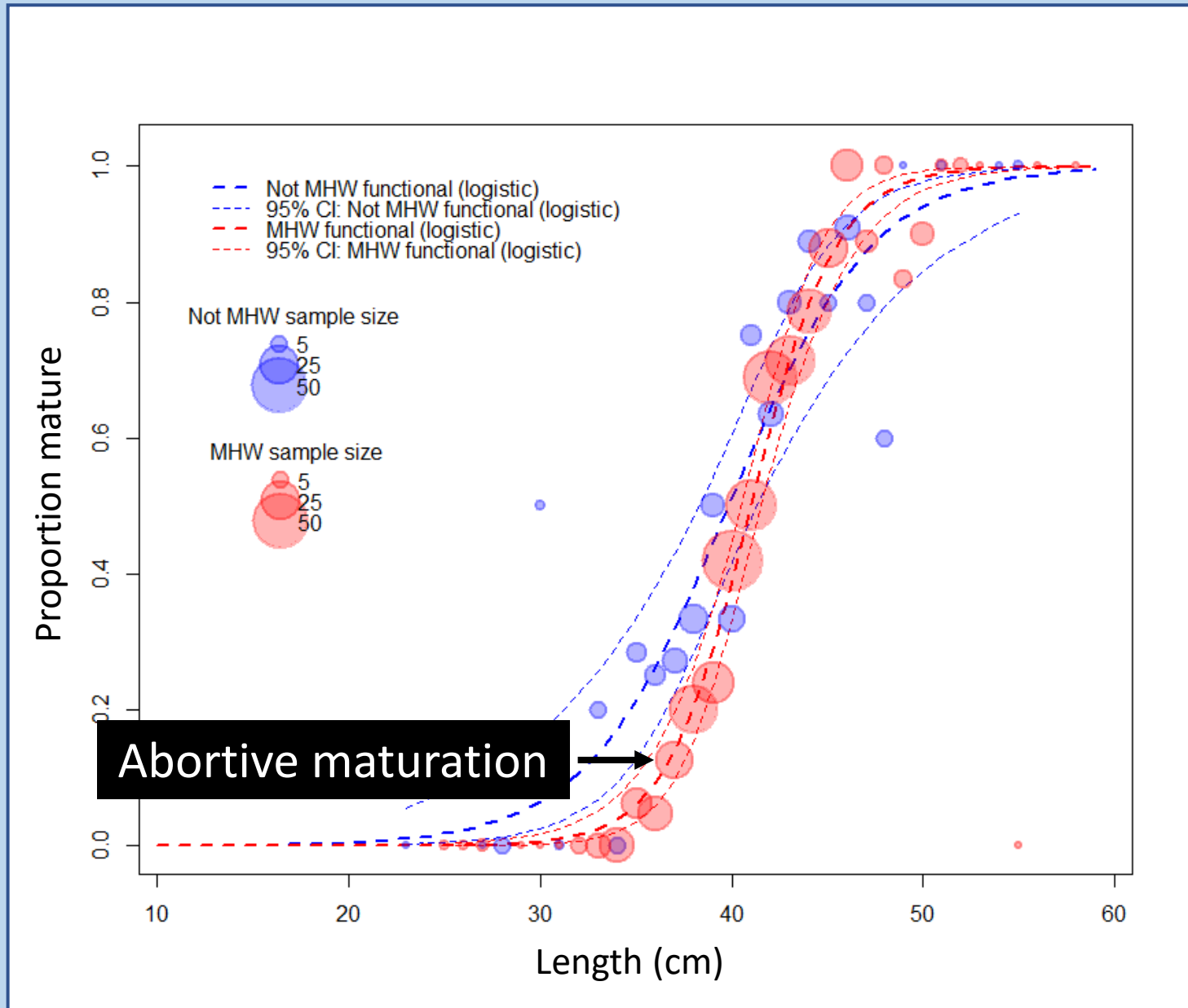
	not MHW	MHW
Abortive maturation	50%	70%
Skipped spawning	25%	20%
<i>L50</i> (functional)	$39.8 \pm 2.0$ cm	$41.0 \pm 0.6$ cm



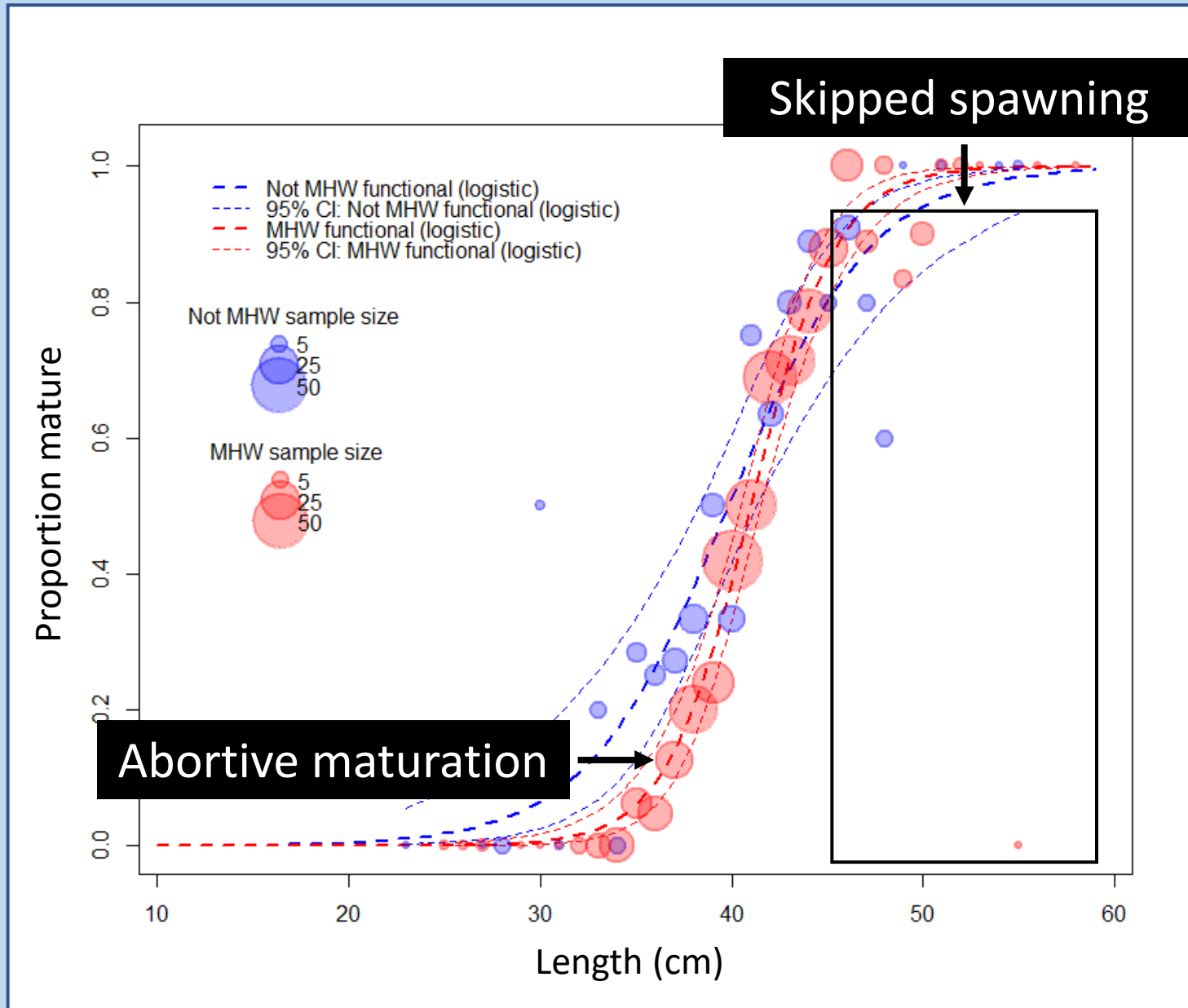
# Results: Marine heat wave impacts



# Results: Marine heat wave impacts

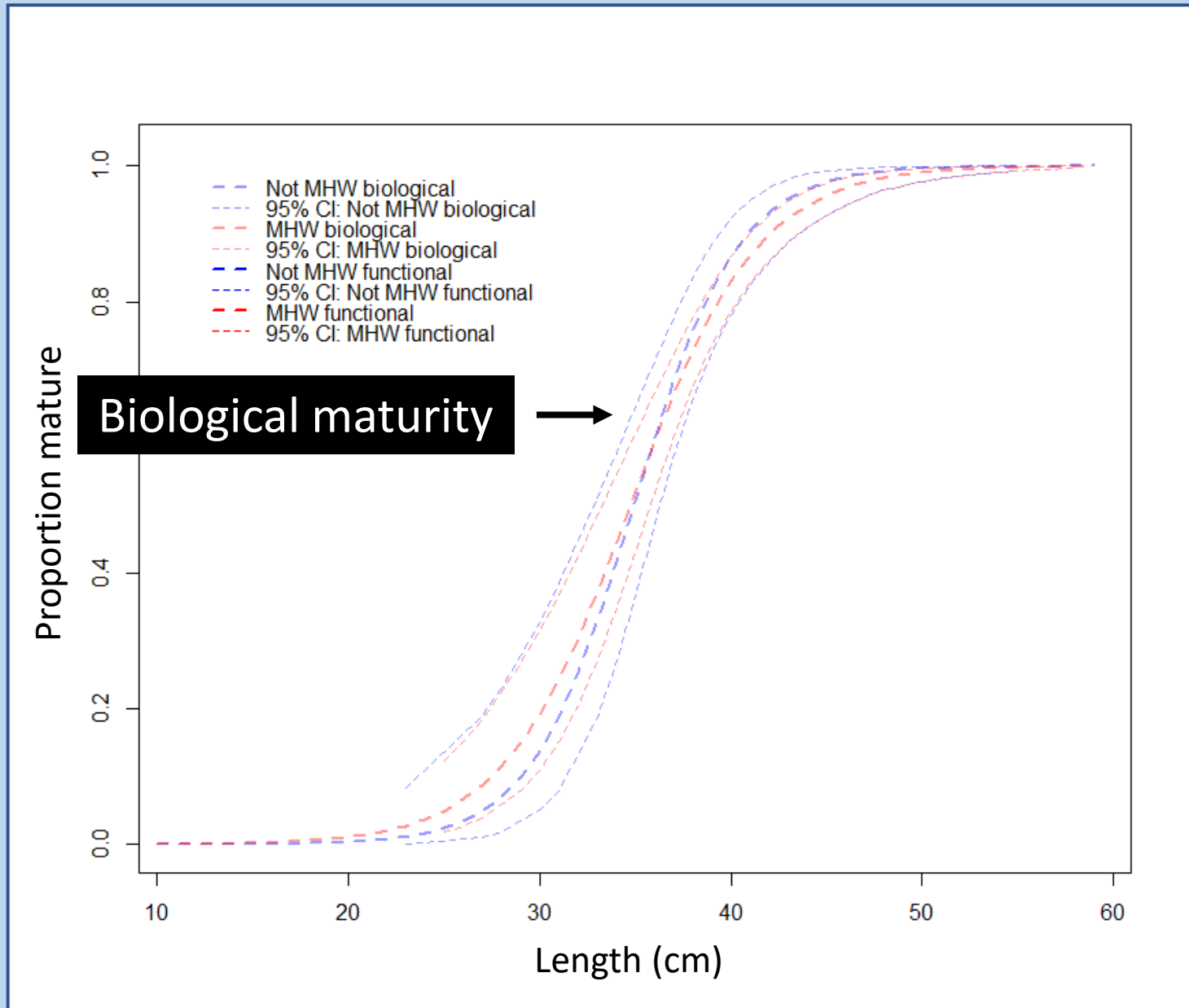


# Results: Marine heat wave impacts





# Results: Marine heat wave impacts



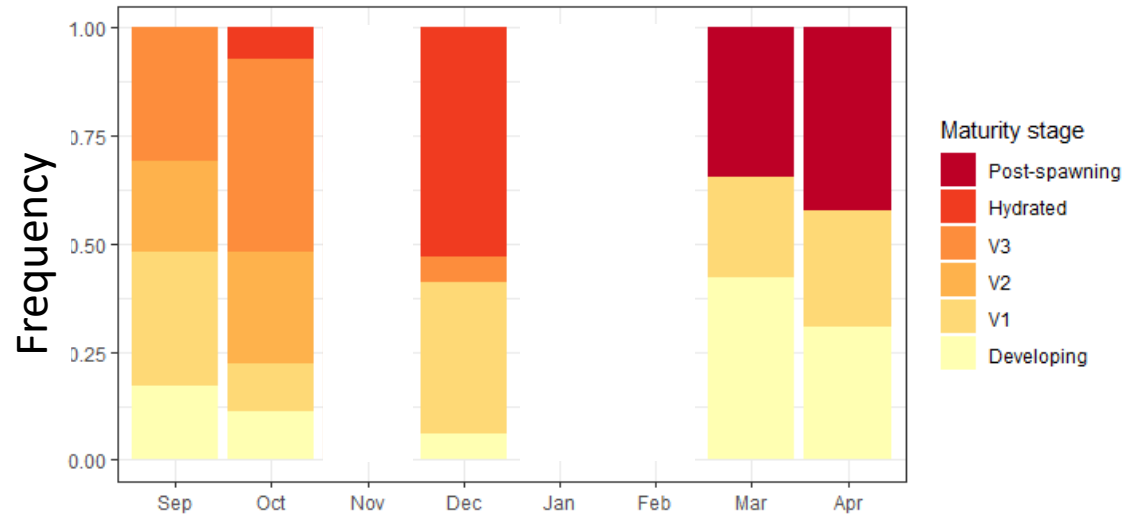


# Results: Marine heat wave impacts

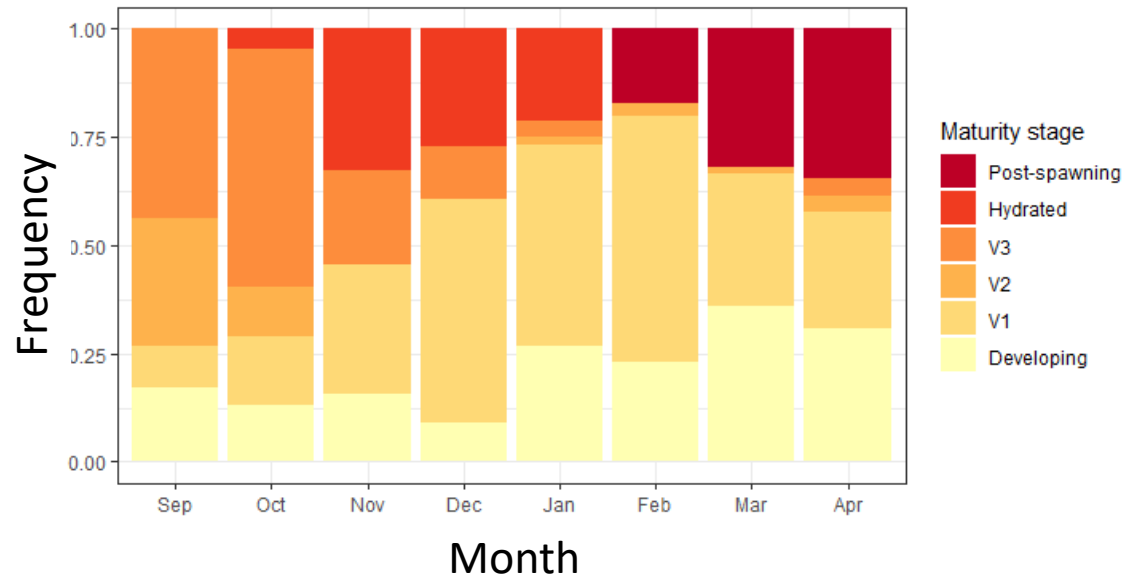
# Results: Marine heat wave impacts

not MHW

## Reproductive development cycle



MHW

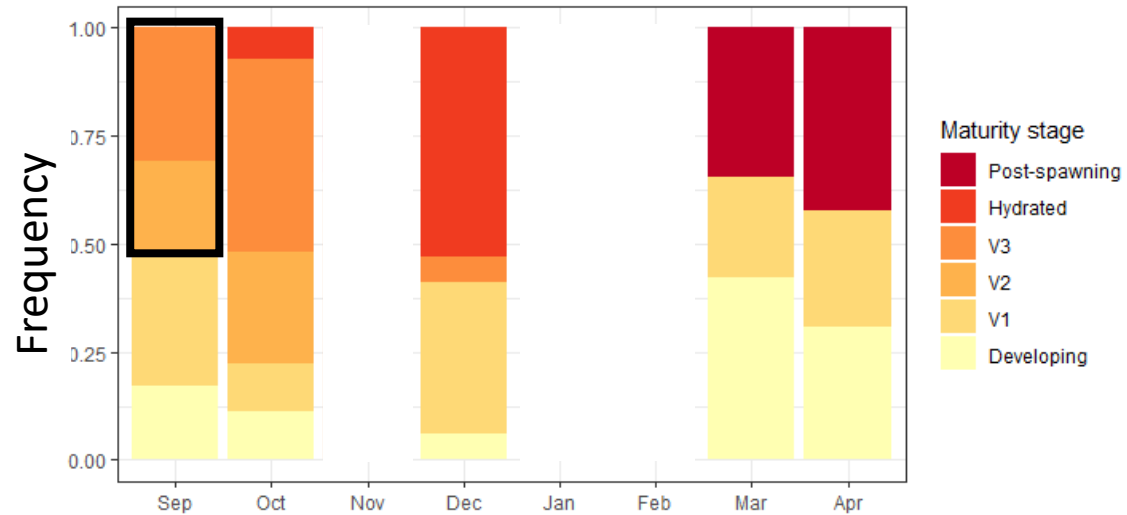




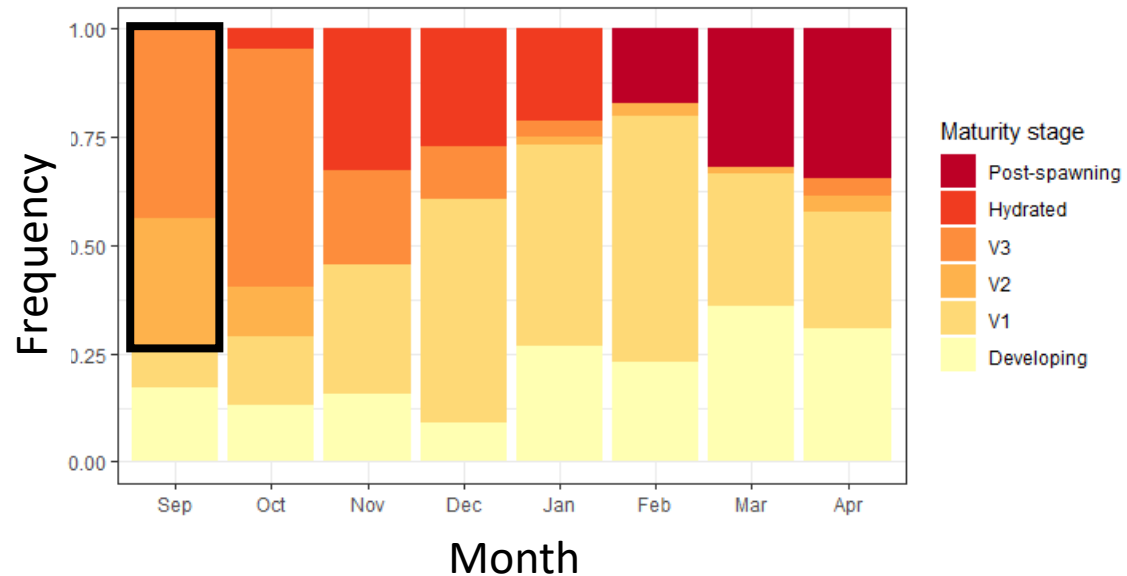
# Results: Marine heat wave impacts

not MHW

## Reproductive development cycle



MHW

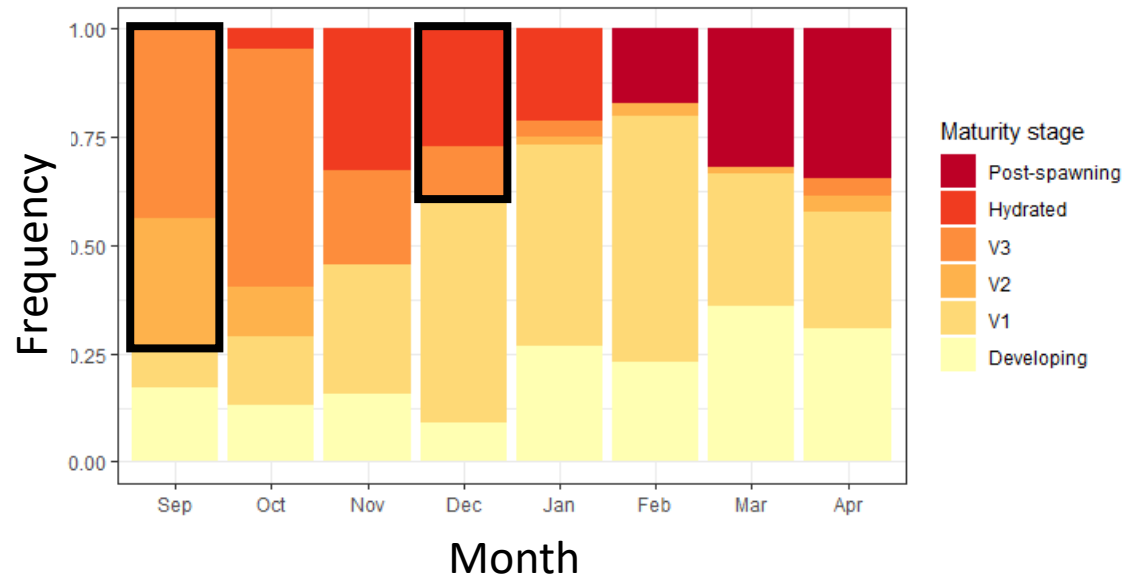
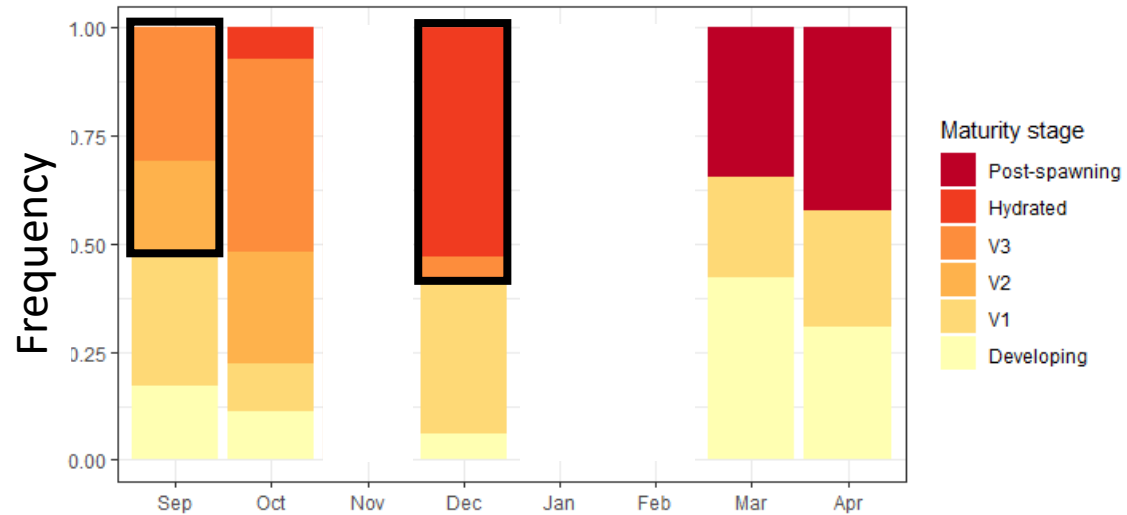


# Results: Marine heat wave impacts

not MHW

MHW

## Reproductive development cycle



# Implications for management



Account for fluidity in  
reproductive strategies

# Implications for management



Account for fluidity in  
reproductive strategies

17% increase from  
biological *L50* to  
functional *L50*

# Implications for management



Species management  
under climate change

# Implications for management



Account for fluidity in  
reproductive strategies

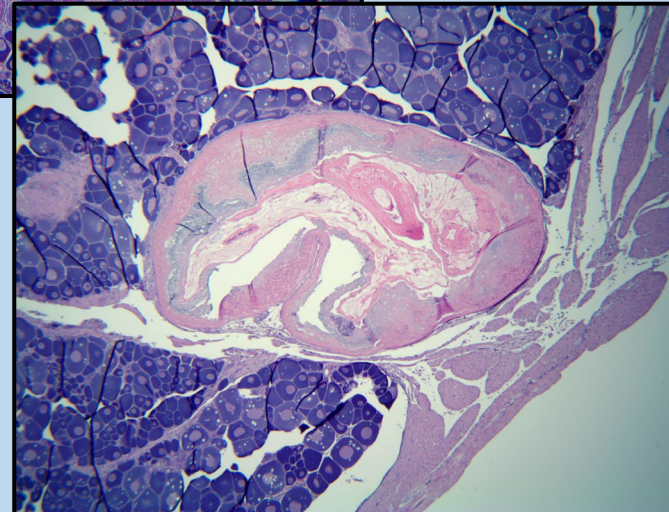
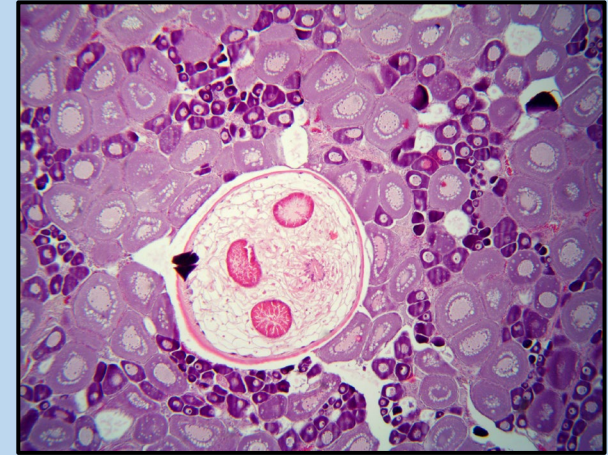
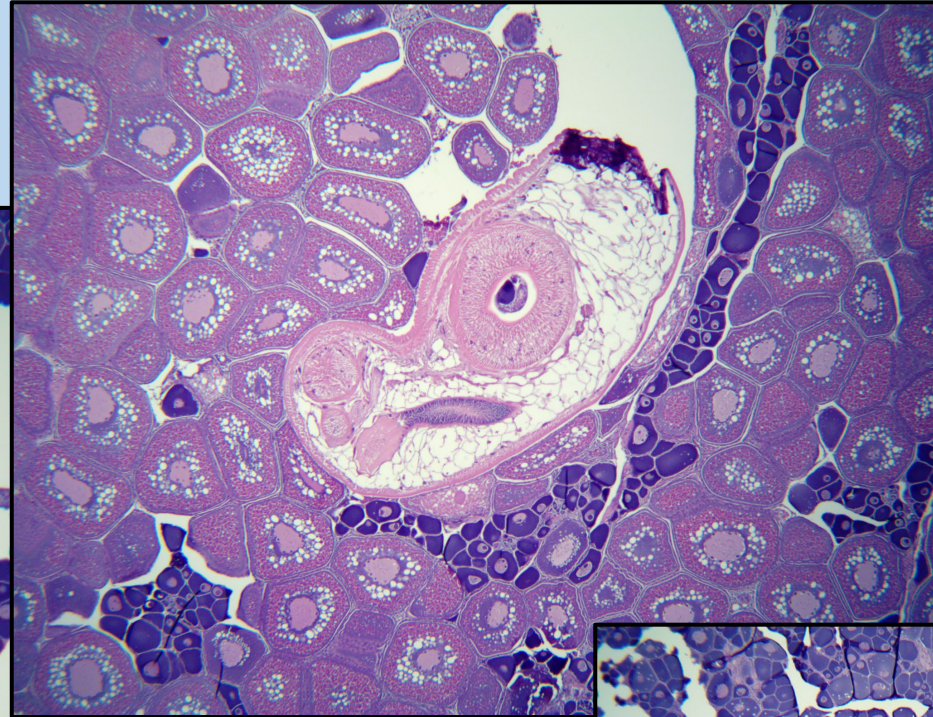
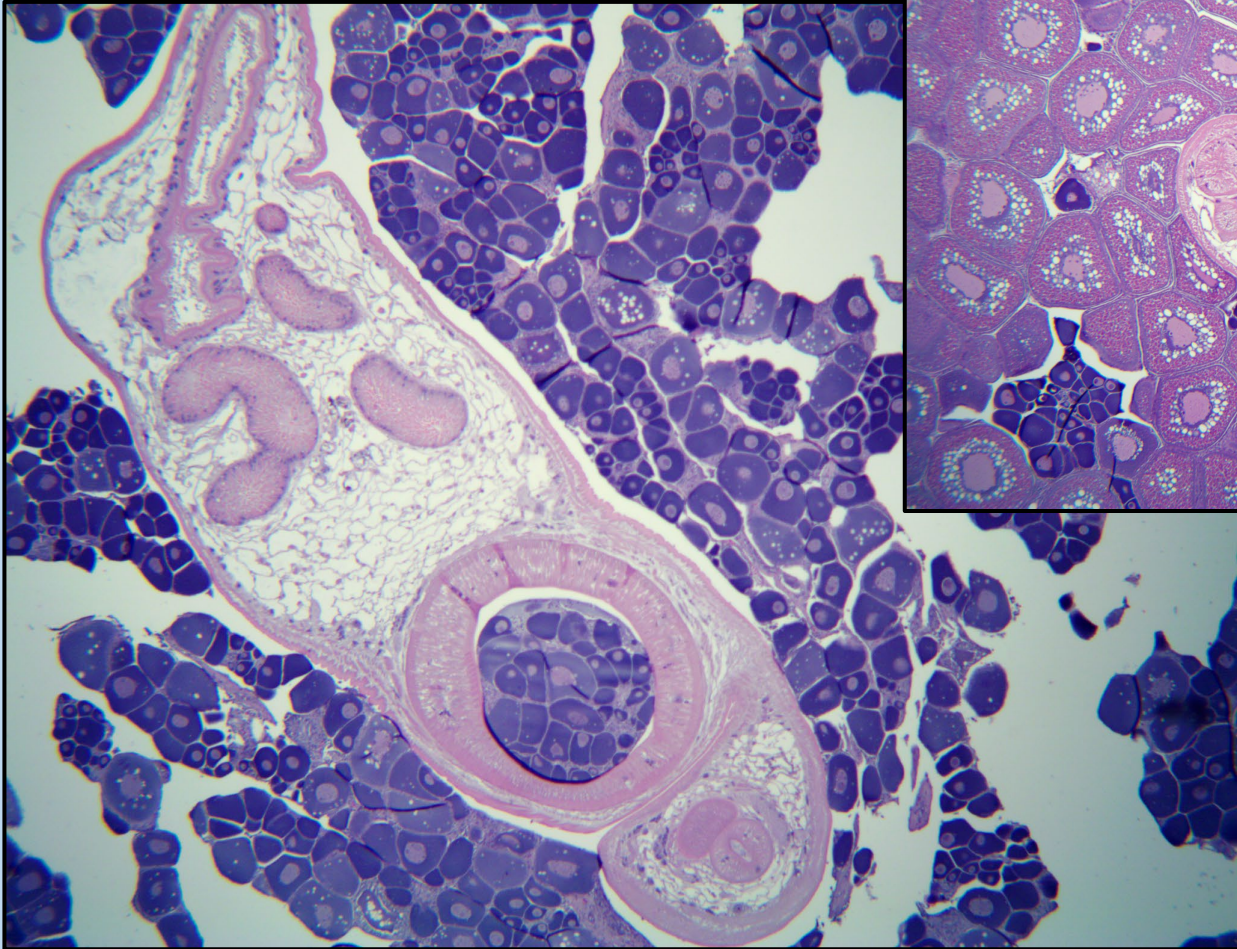
Species management  
under climate change

# Parasitic infection impacts

opening a can of worms...

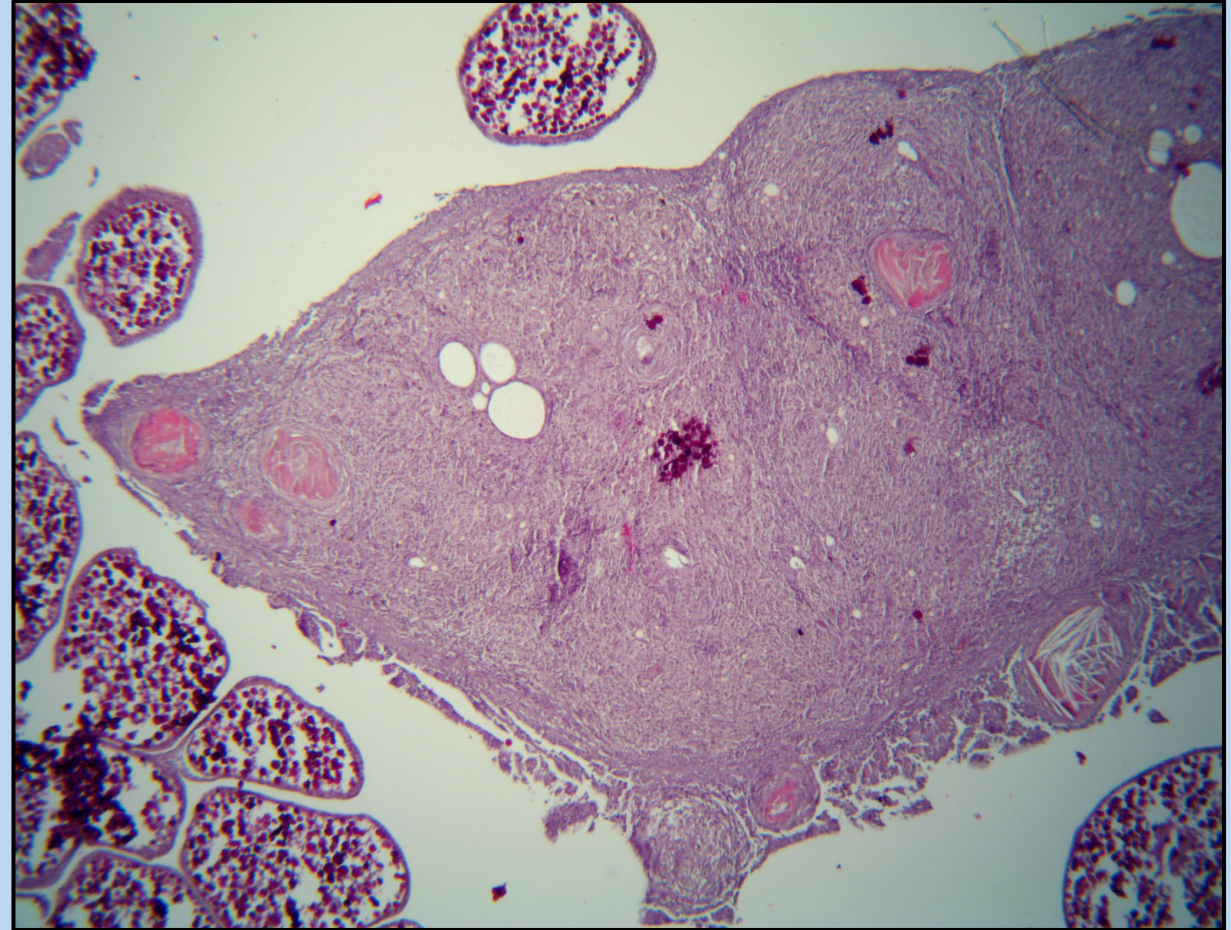
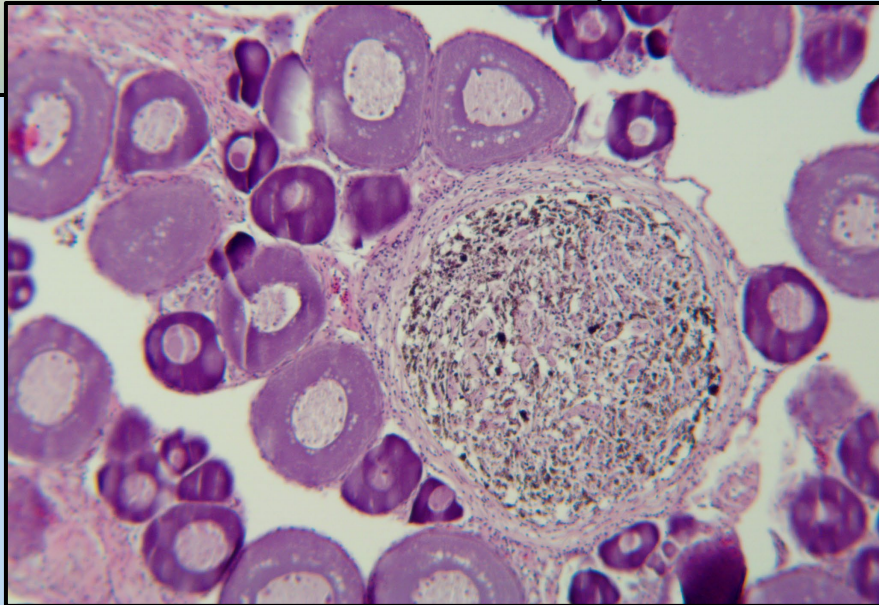
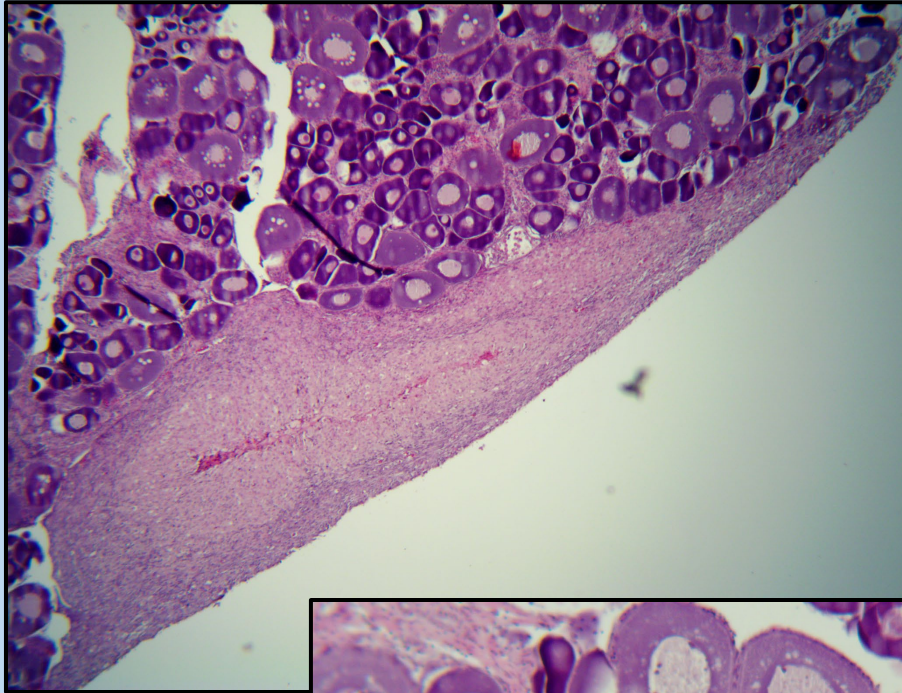
# Parasitic infection impacts

opening a can of worms...





# Parasitic infection impacts



Never swim alone



# Please contact me with additional questions!



[claire.rosemond@oregonstate.edu](mailto:claire.rosemond@oregonstate.edu)



[@SeaRosemond](https://twitter.com/SeaRosemond)

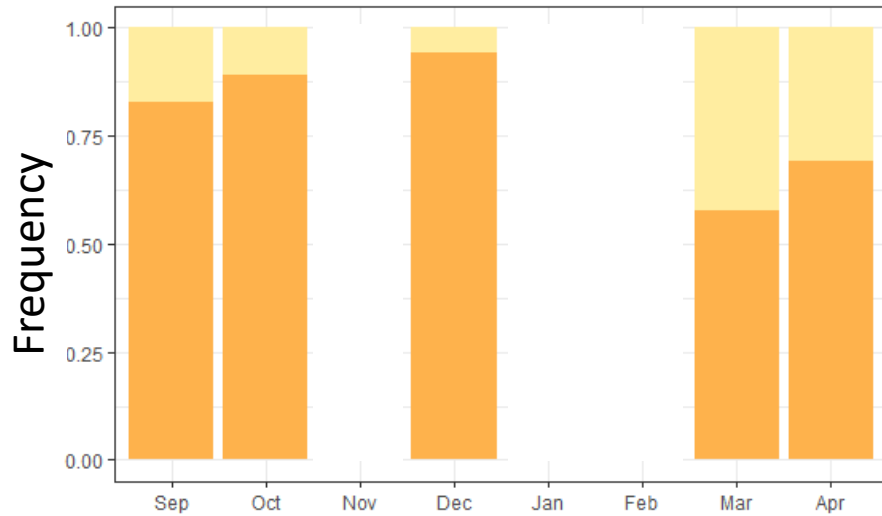


[Claire Rosemond](#)

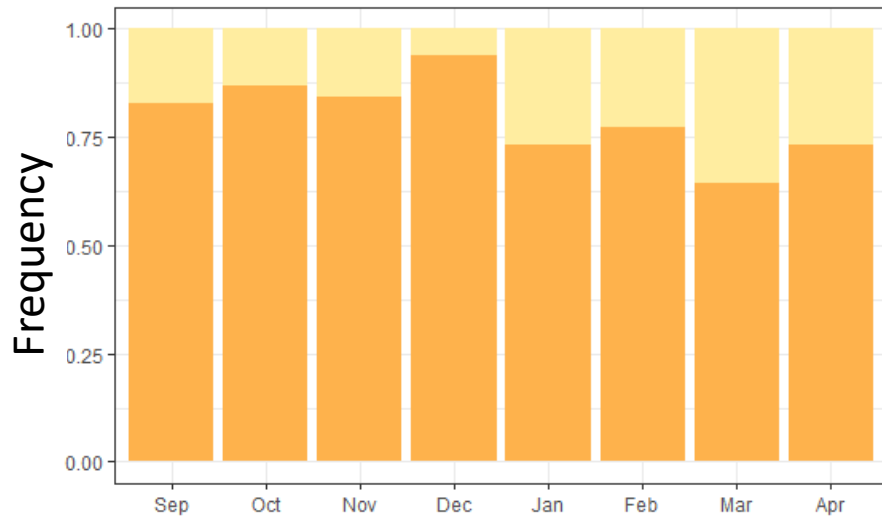


# Results: Marine heat wave impacts

## Biological maturity



not MHW

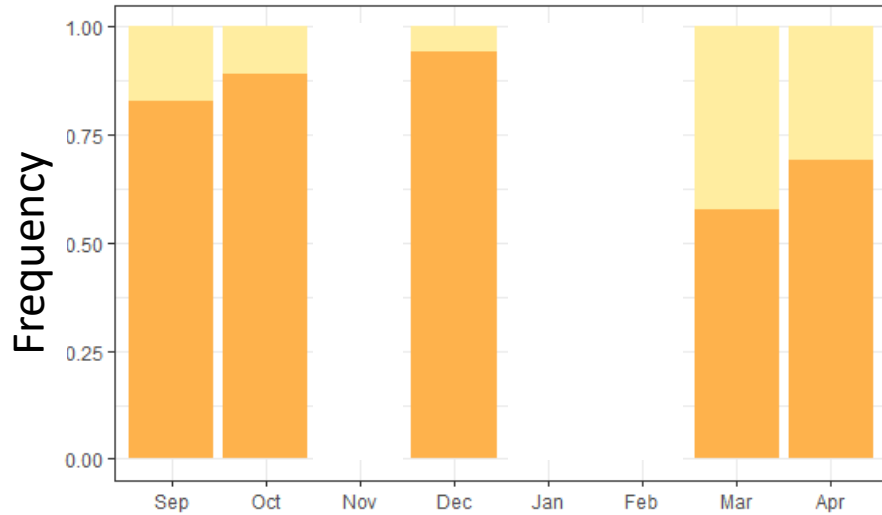


MHW

Month

# Results: Marine heat wave impacts

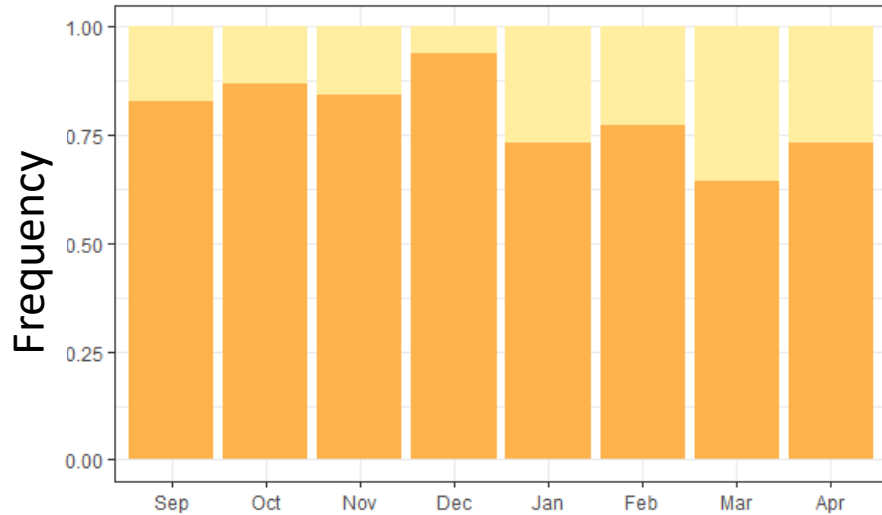
## Biological maturity



not MHW

Biologically mature

No  
Yes



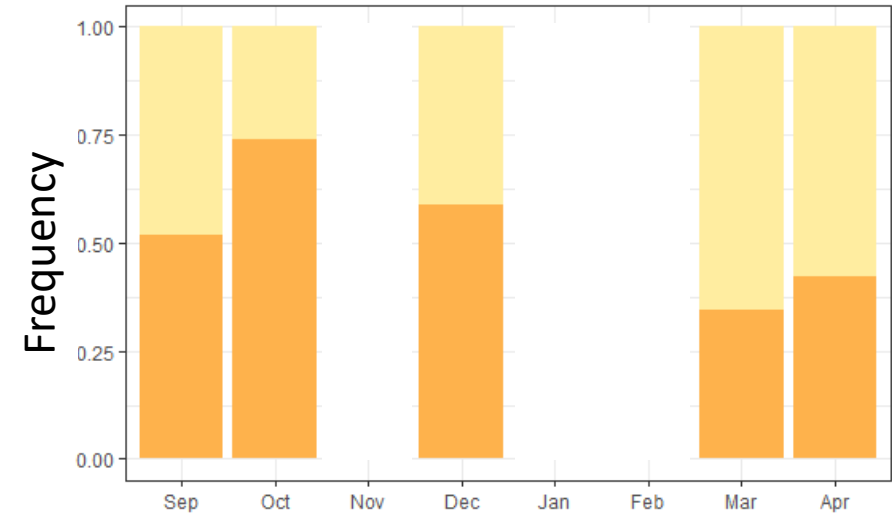
MHW

Biologically mature

No  
Yes

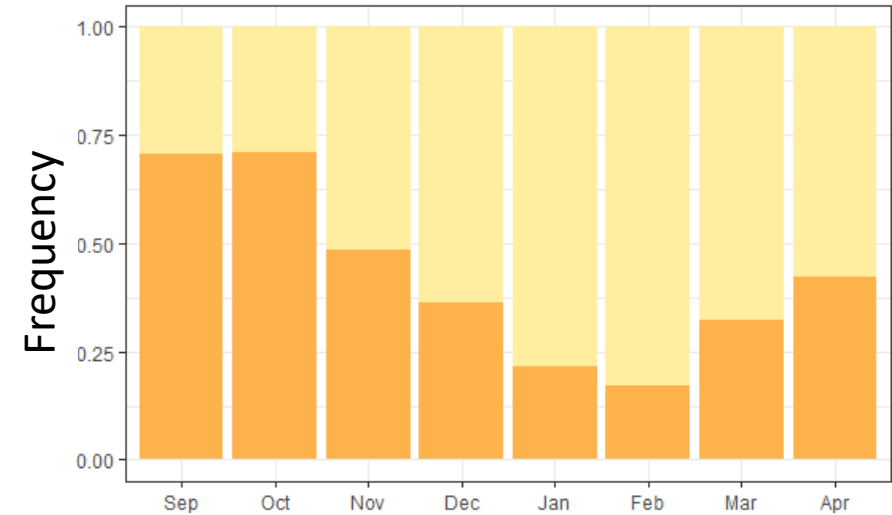
Month

## Functional maturity



Functionally mature

No  
Yes



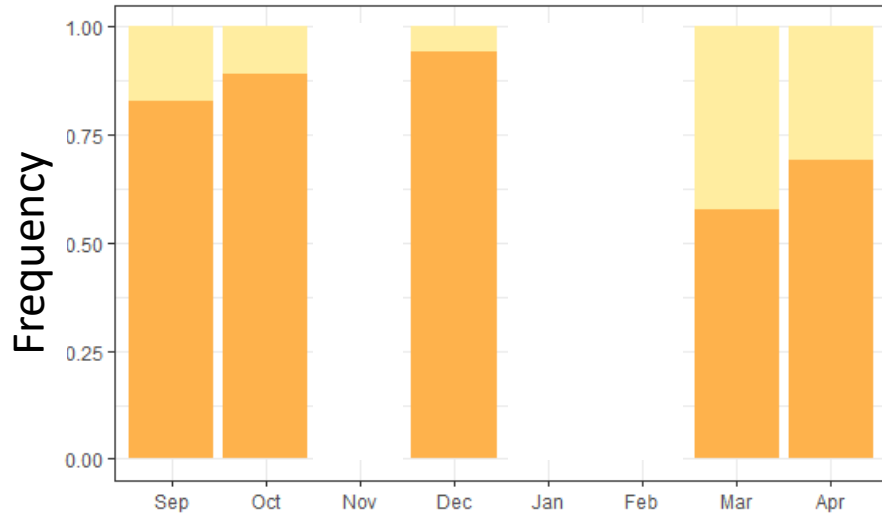
Functionally mature

No  
Yes

Month

# Results: Marine heat wave impacts

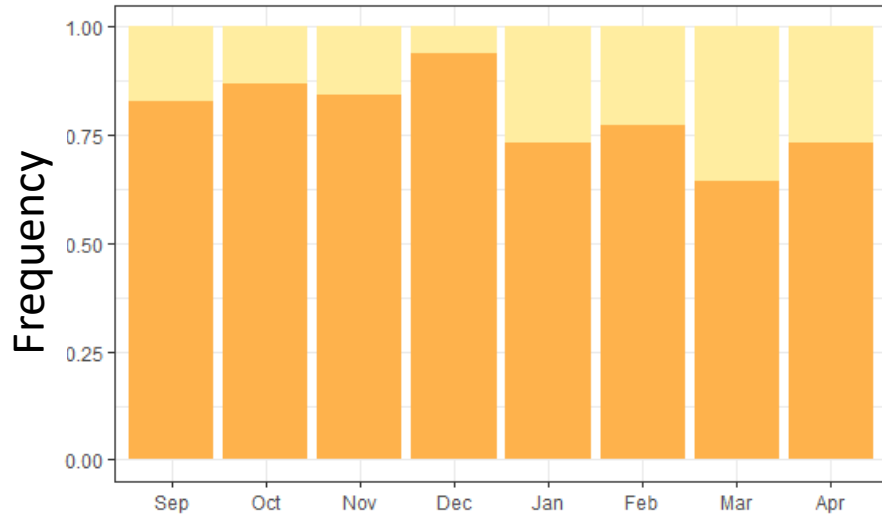
## Biological maturity



not MHW

Biologically mature

No  
Yes



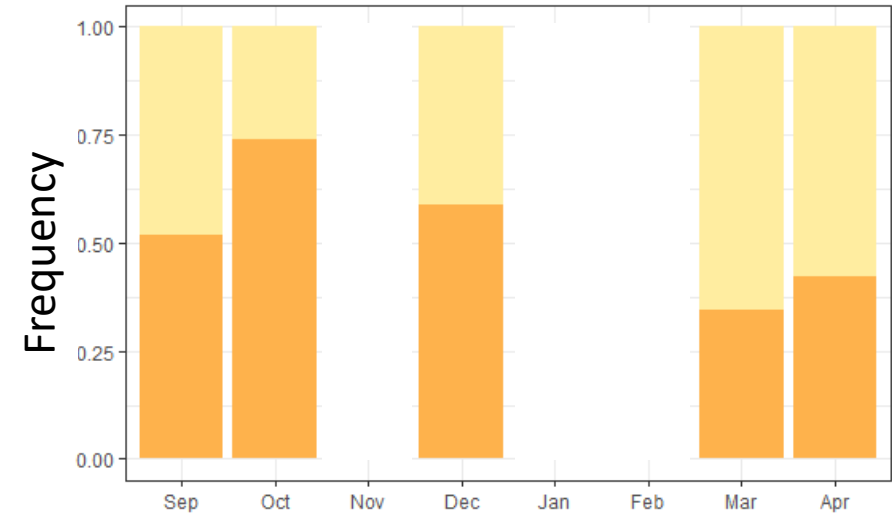
MHW

Biologically mature

No  
Yes

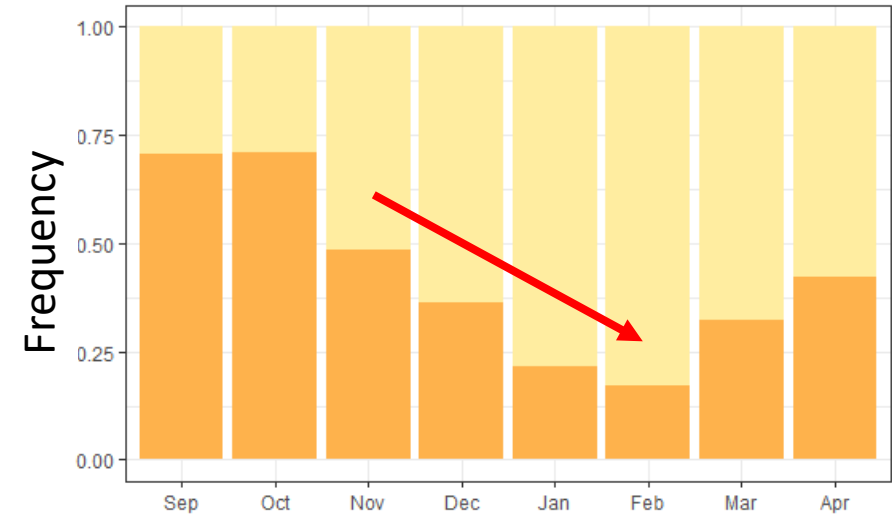
Month

## Functional maturity



Functionally mature

No  
Yes



Functionally mature

No  
Yes

Month

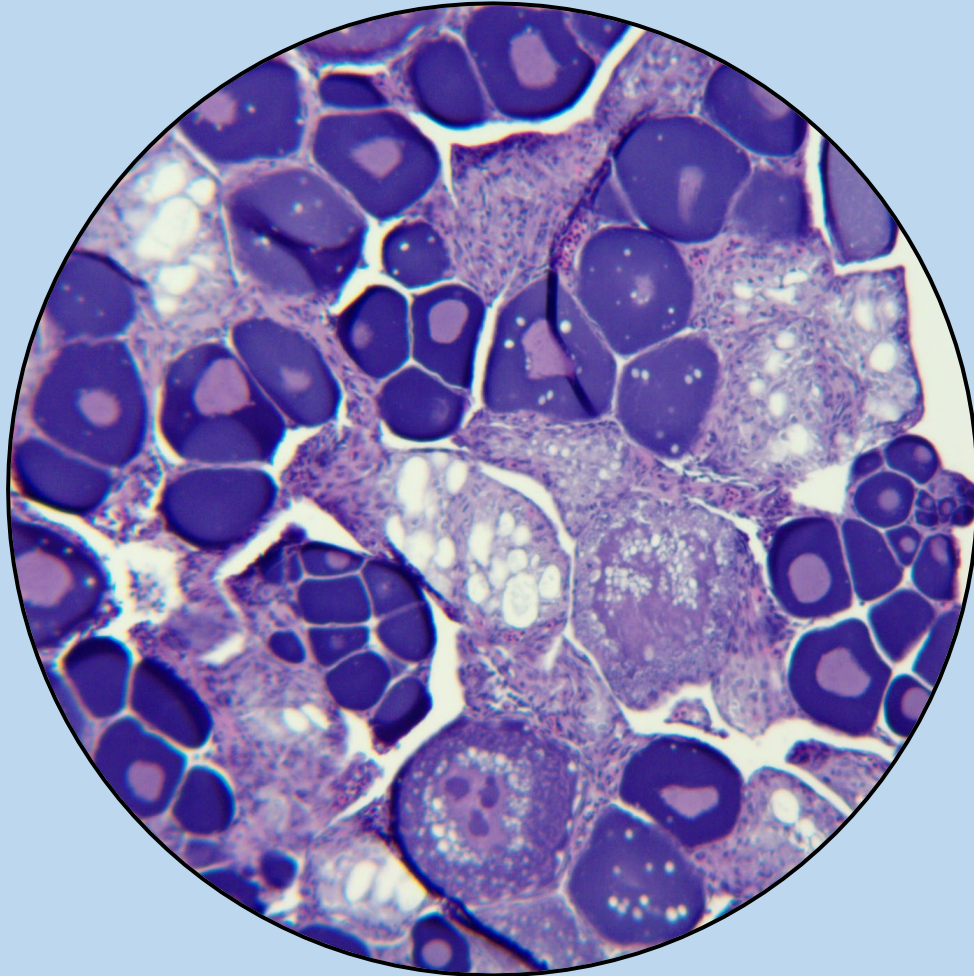




# Reproductive strategy

Abortive maturation

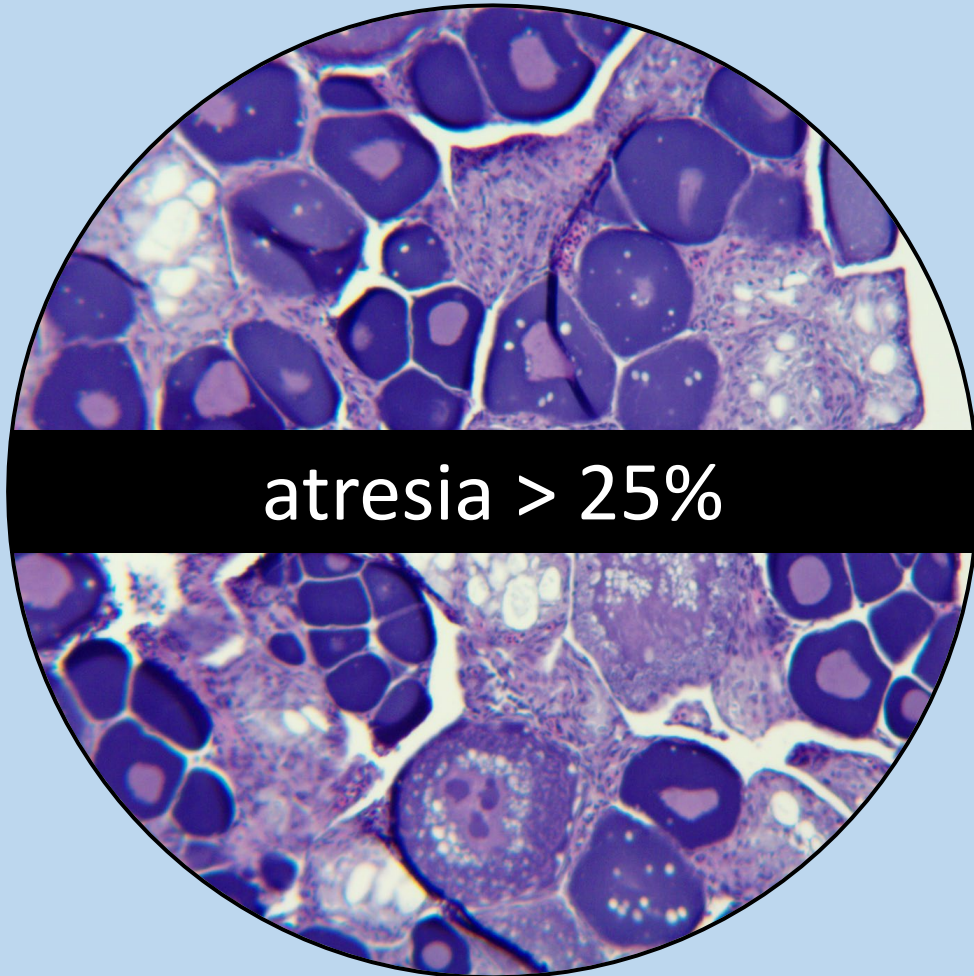
Skipped spawning



# Reproductive strategy

Abortive maturation

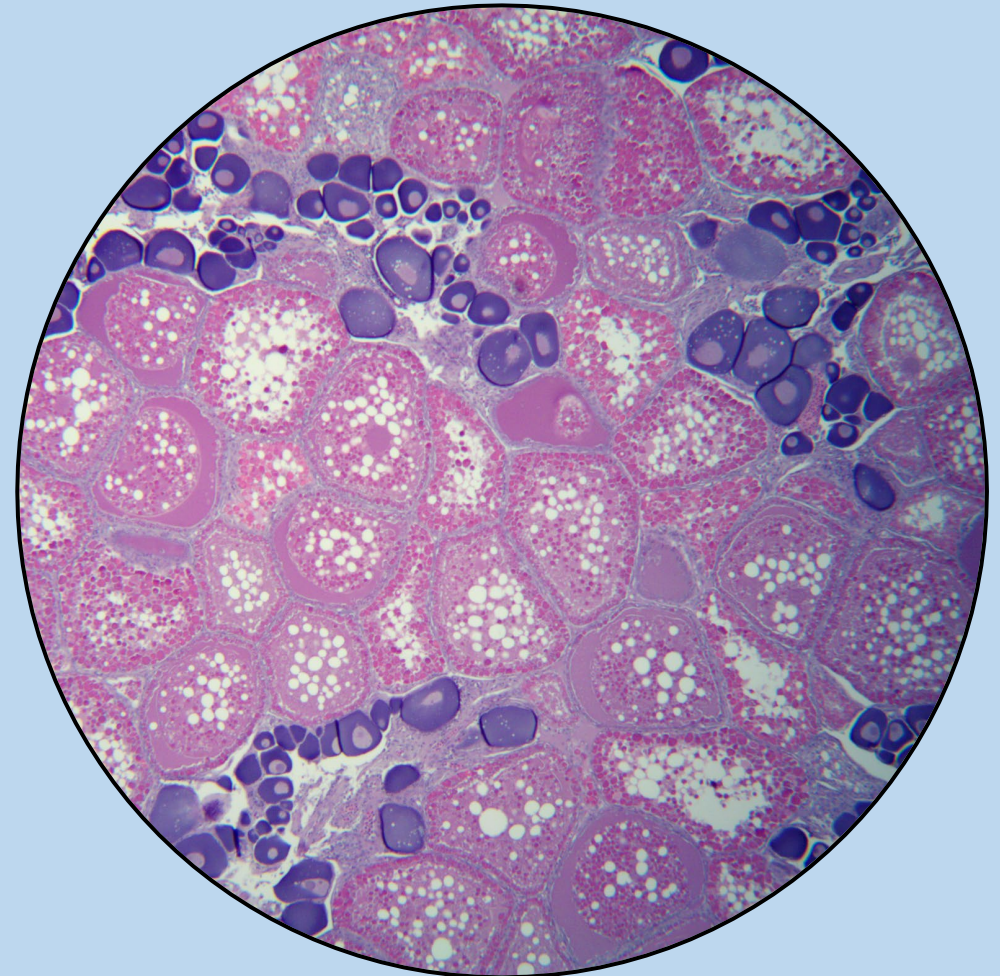
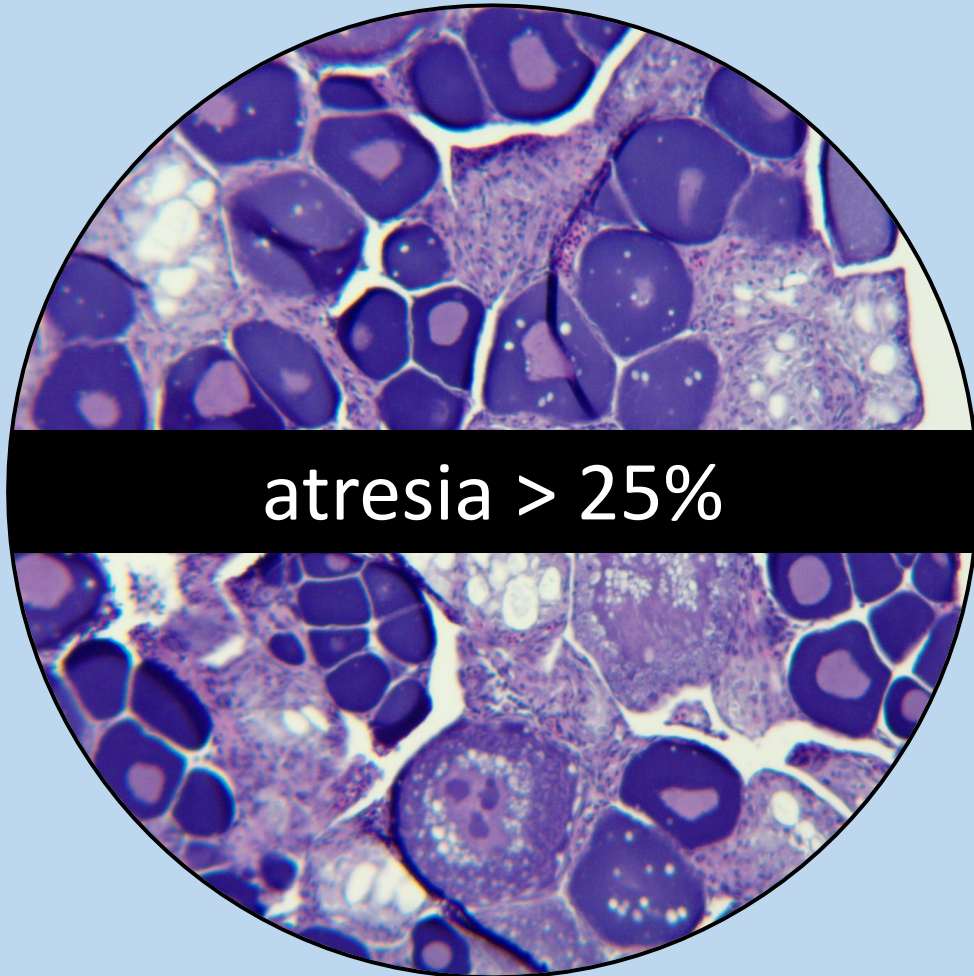
Skipped spawning



# Reproductive strategy

Abortive maturation

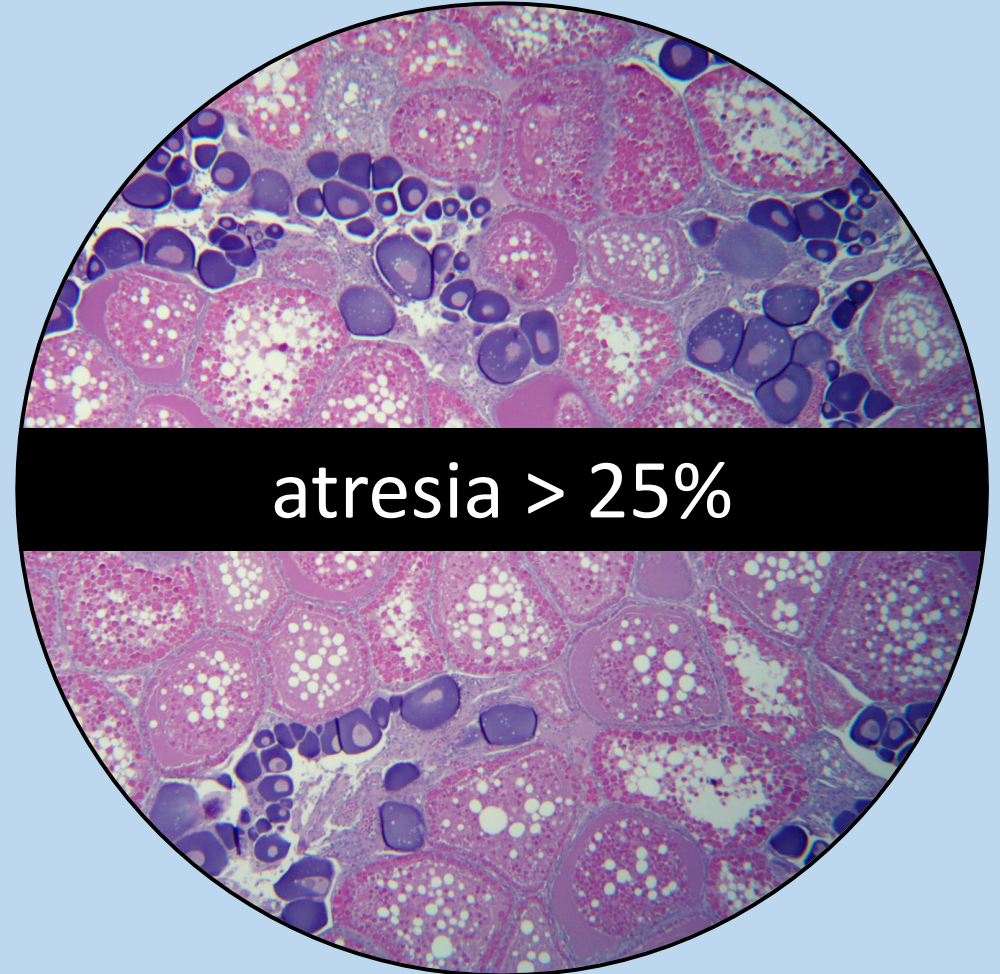
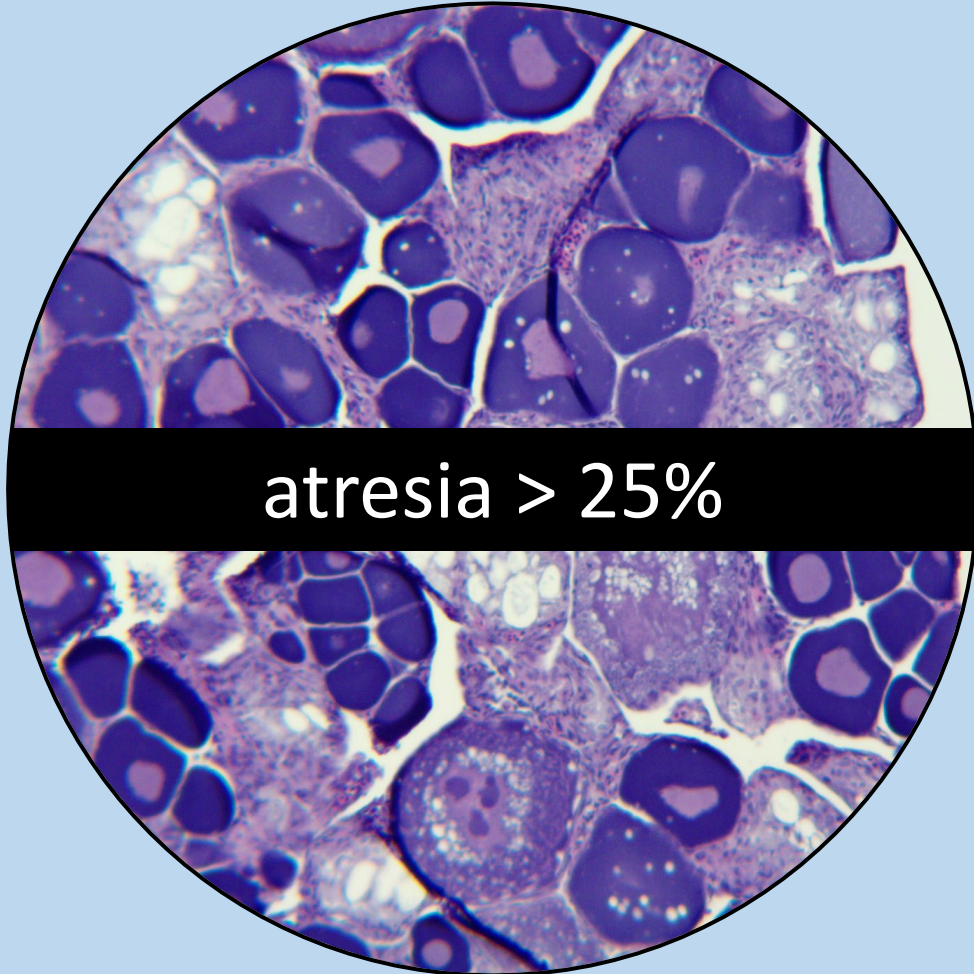
Skipped spawning



# Reproductive strategy

Abortive maturation

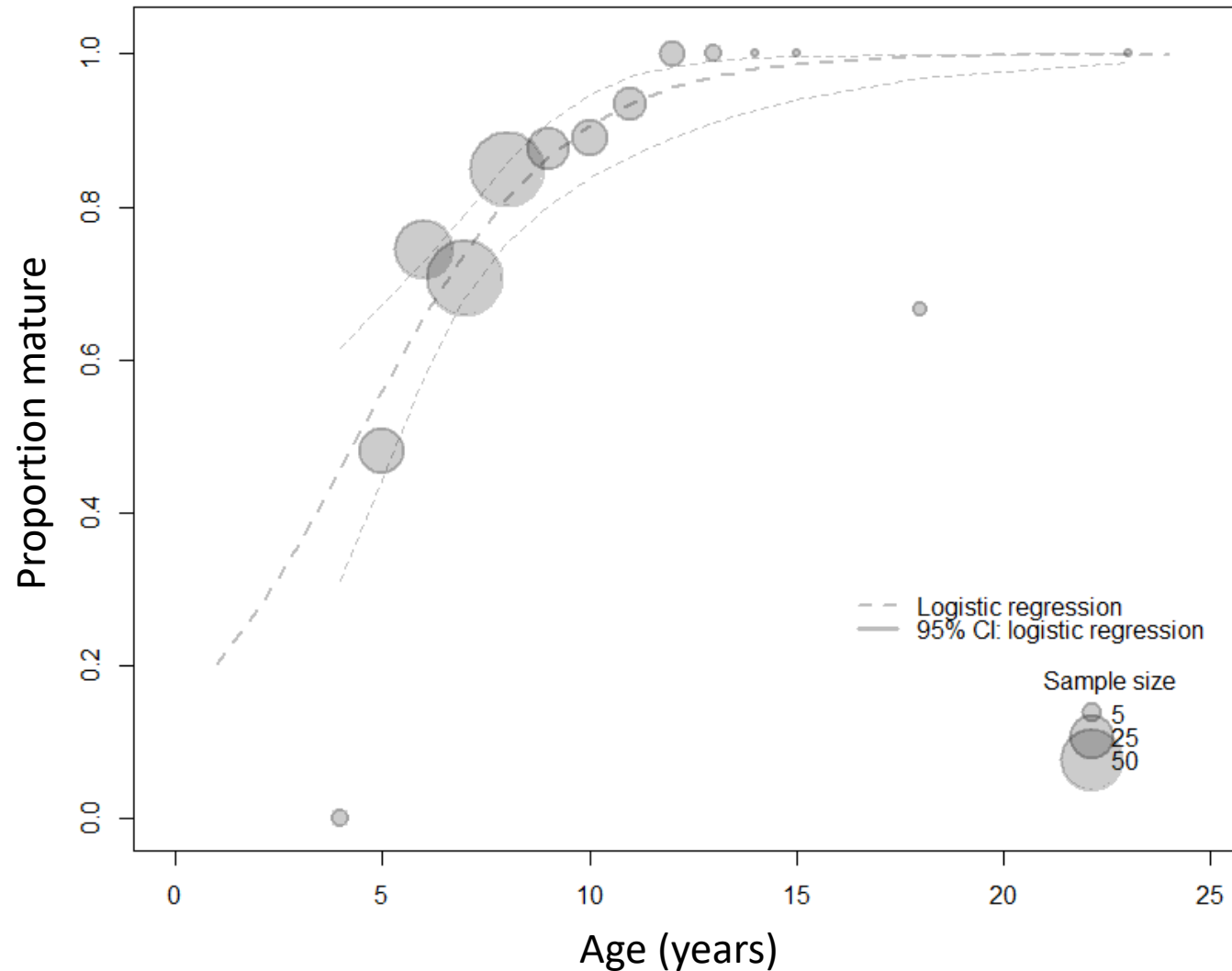
Skipped spawning



# Results: Age at maturity

# Results: Age at maturity

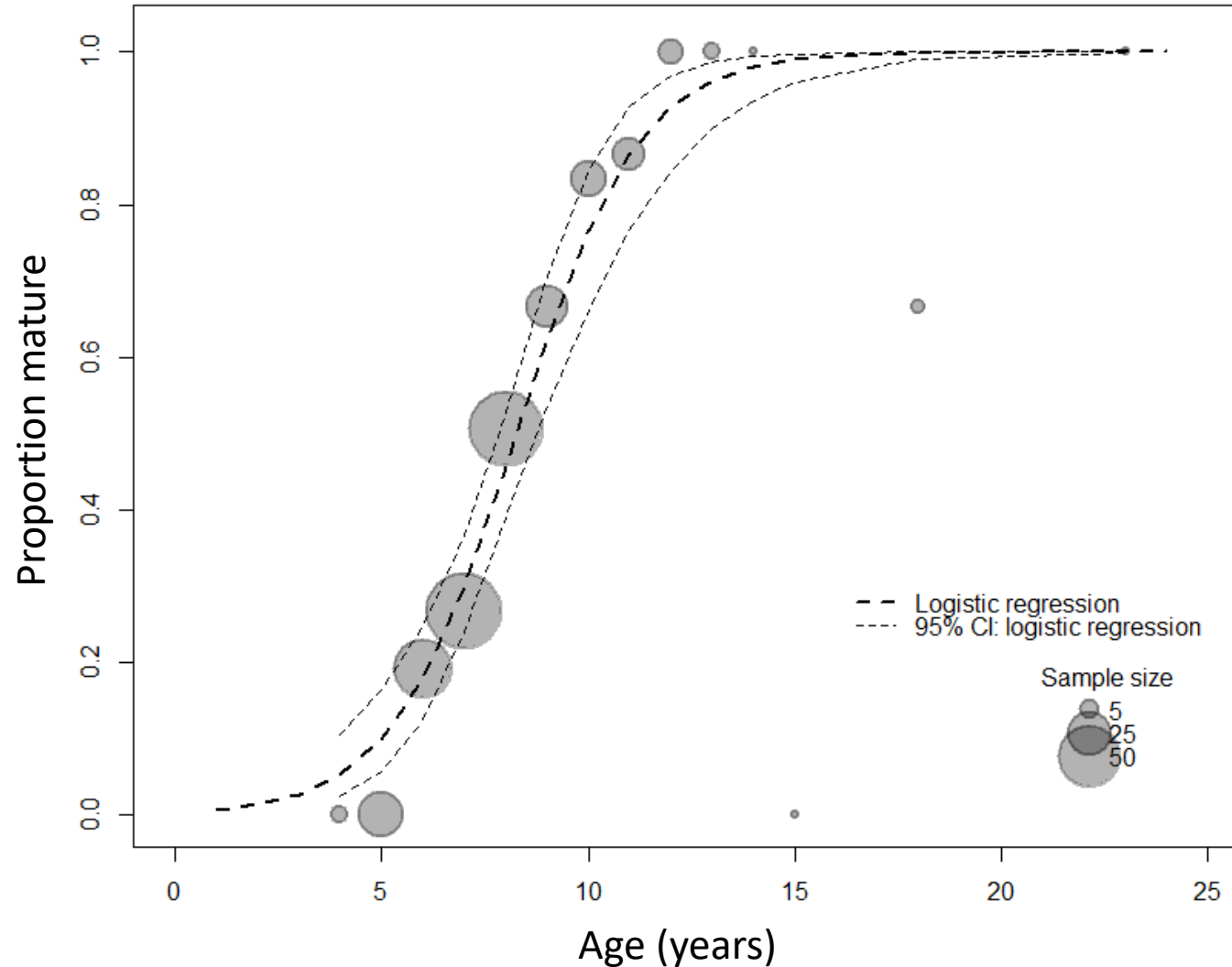
## Biological maturity



$A_{50} = 4.4 \pm 0.2$  yr

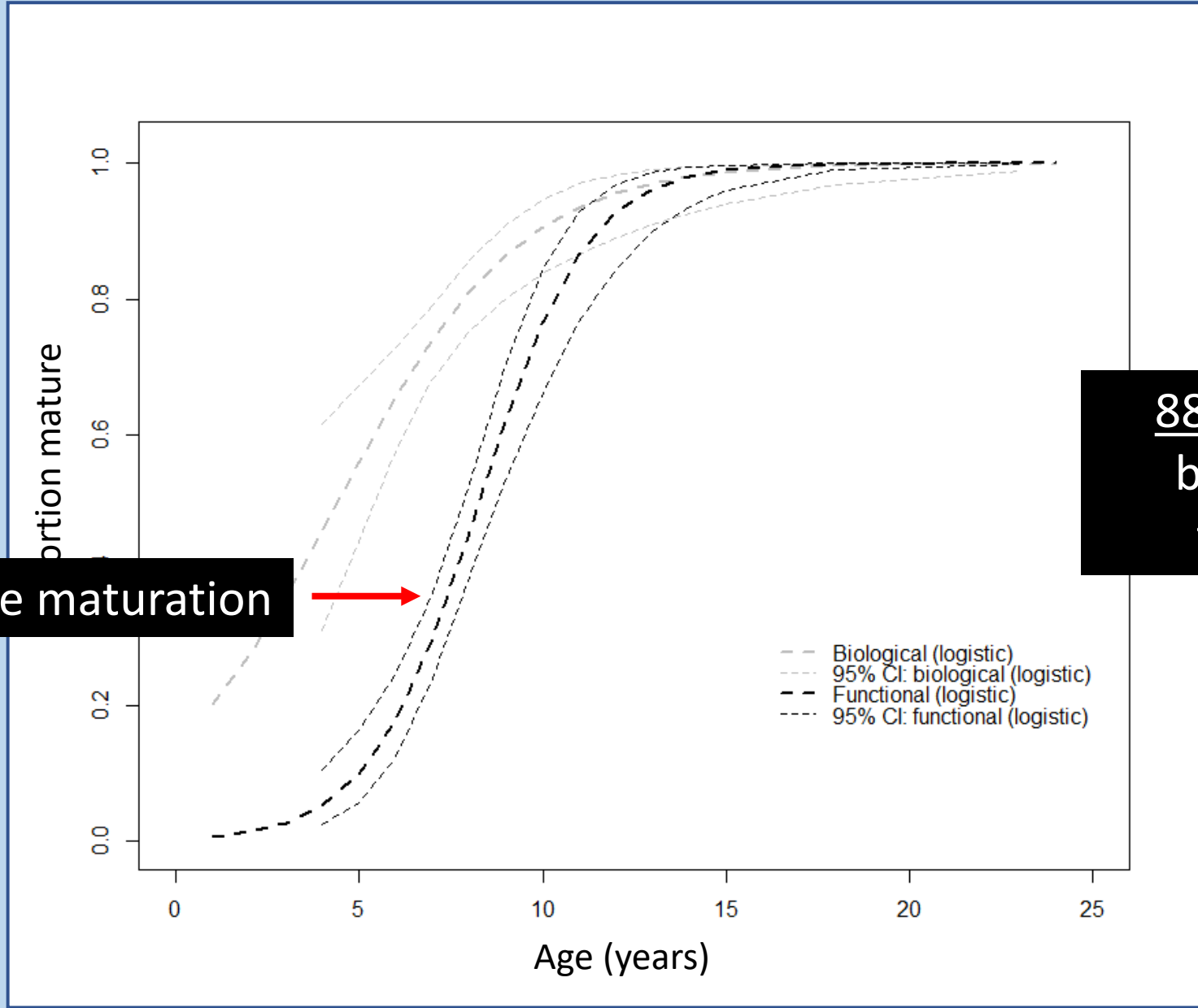
# Results: Age at maturity

## Functional maturity



$A50 = 8.3 \pm 0.2$  yr

# Results: Age at maturity



Abortive maturation

88% increase from biological A50 to functional A50