



# NOAA Fisheries Alaska Bottom Trawl Survey Public Data Products

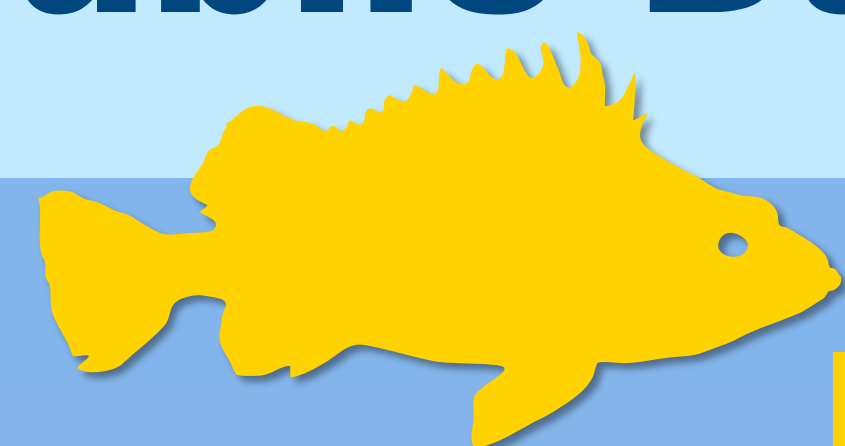
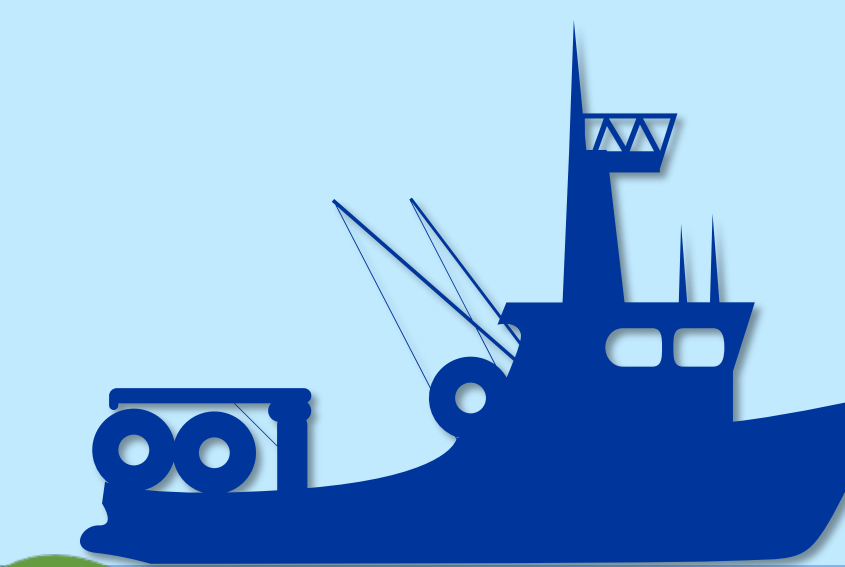


And many more

Emily H. Markowitz\*, Sean K. Rohan, Duane E. Stevenson, and Ned A. Laman

Groundfish Assessment Program, Alaska Fisheries Science Center, National Marine Fisheries Service, NOAA, 7600 Sand Point Way N.E., Seattle, Washington 98115

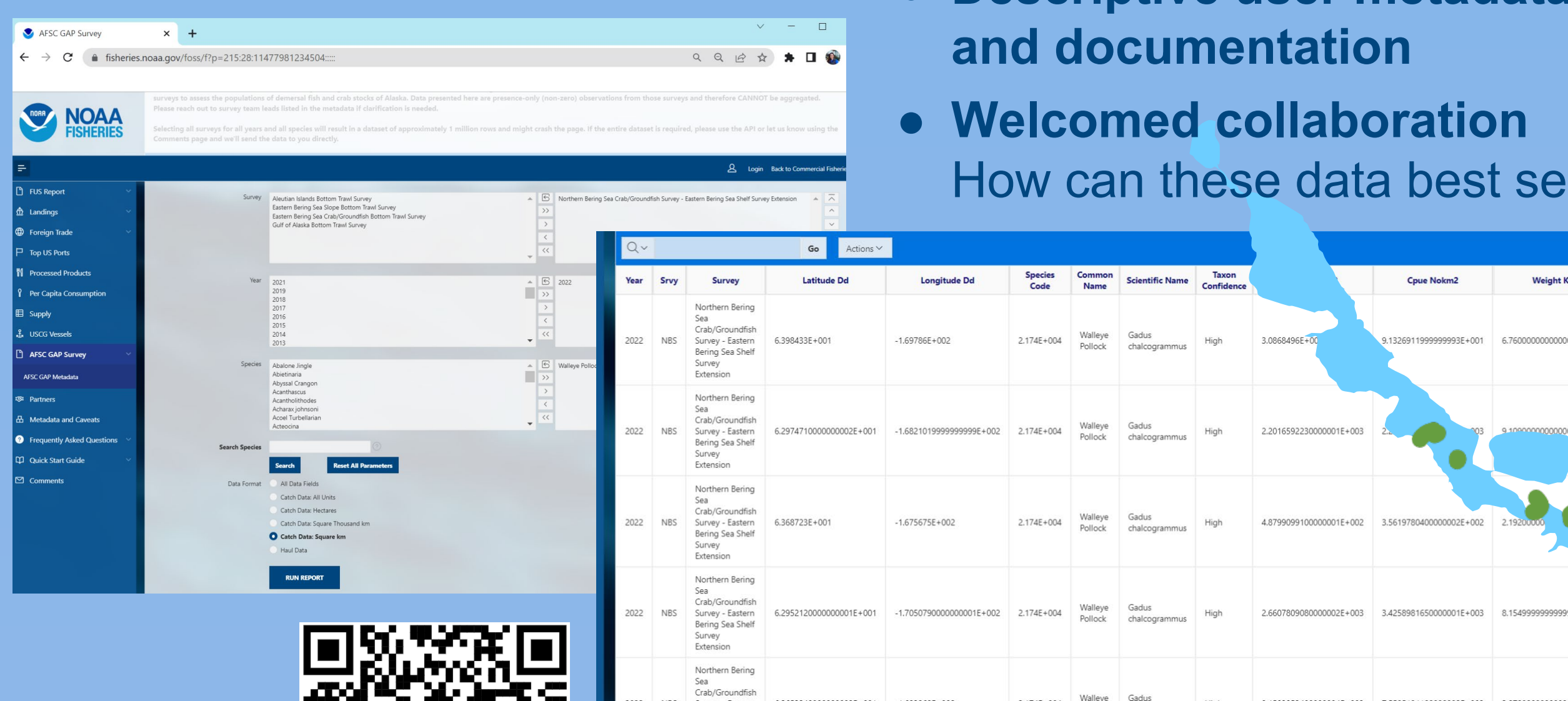
\*emily.markowitz@noaa.gov | GitHub @emilymarkowitz-noaa @afsc-gap-products



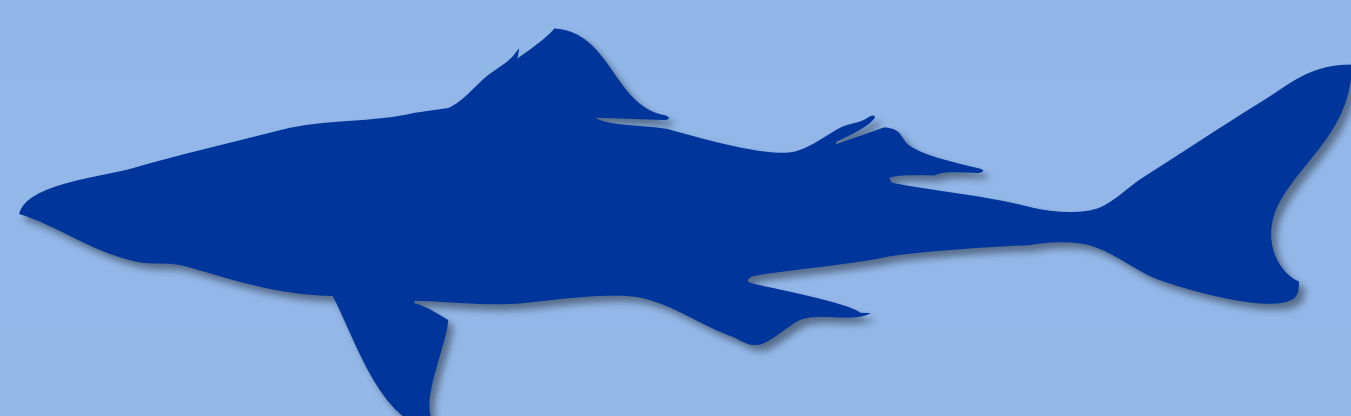
## Fisheries One Stop Shop (FOSS) Data Portal

<https://www.fisheries.noaa.gov/foss>  
Catch, environmental, and catch-per-unit effort data from our surveys for public use.

- **Modernized data accessibility**  
Interact with user-friendly tables or pull data dynamically through our API
- **Descriptive user metadata and documentation**
- **Welcomed collaboration**  
How can these data best serve you?



FOSS data portal



## Request Data From Us

<https://github.com/afsc-gap-products/data-requests>  
Request data that are not available from our other standard data products.

- **Email our team:**  
afsc.gap.metadata@noaa.gov
- **Request data through our GitHub Repository by submitting an issue**

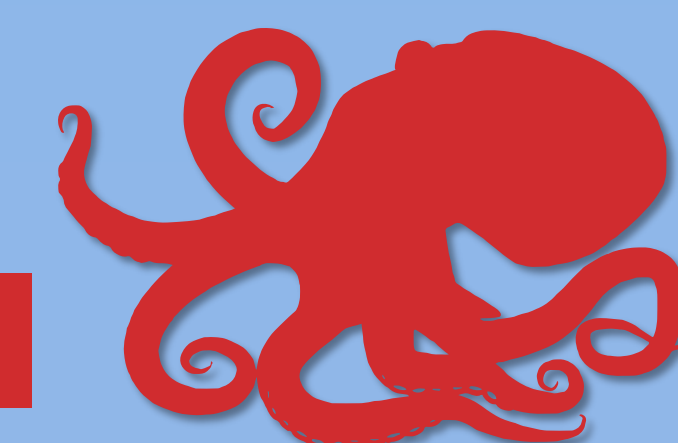


Submit data requests through GitHub



Submit data requests through email

## Work With Our Tools: Open-Source R Packages



<https://github.com/afsc-gap-products/>  
R packages to produce survey data products and visualizations.

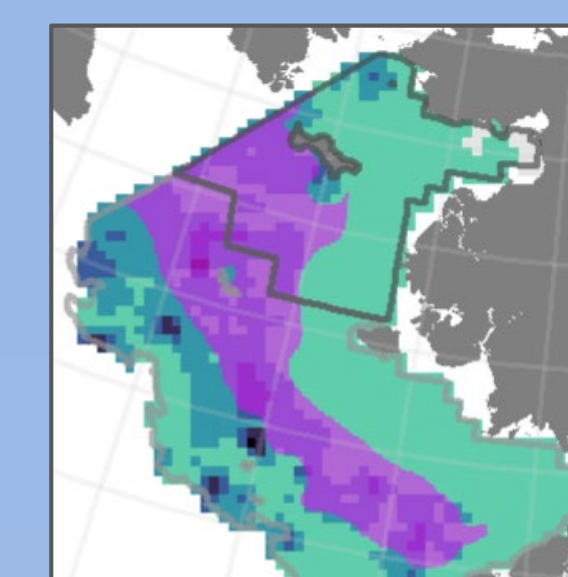
- **{akgfmmaps}** bottom trawl survey map layers and plotting examples
- **{coldpool}** cold pool area and temperature data for the Bering Sea
- **{akfishcondition}** groundfish morphometric condition indicators for fish in the Bering Sea, Aleutian Islands, and Gulf of Alaska



GAP products GitHub org



{akfishcondition} R package



{coldpool} R package

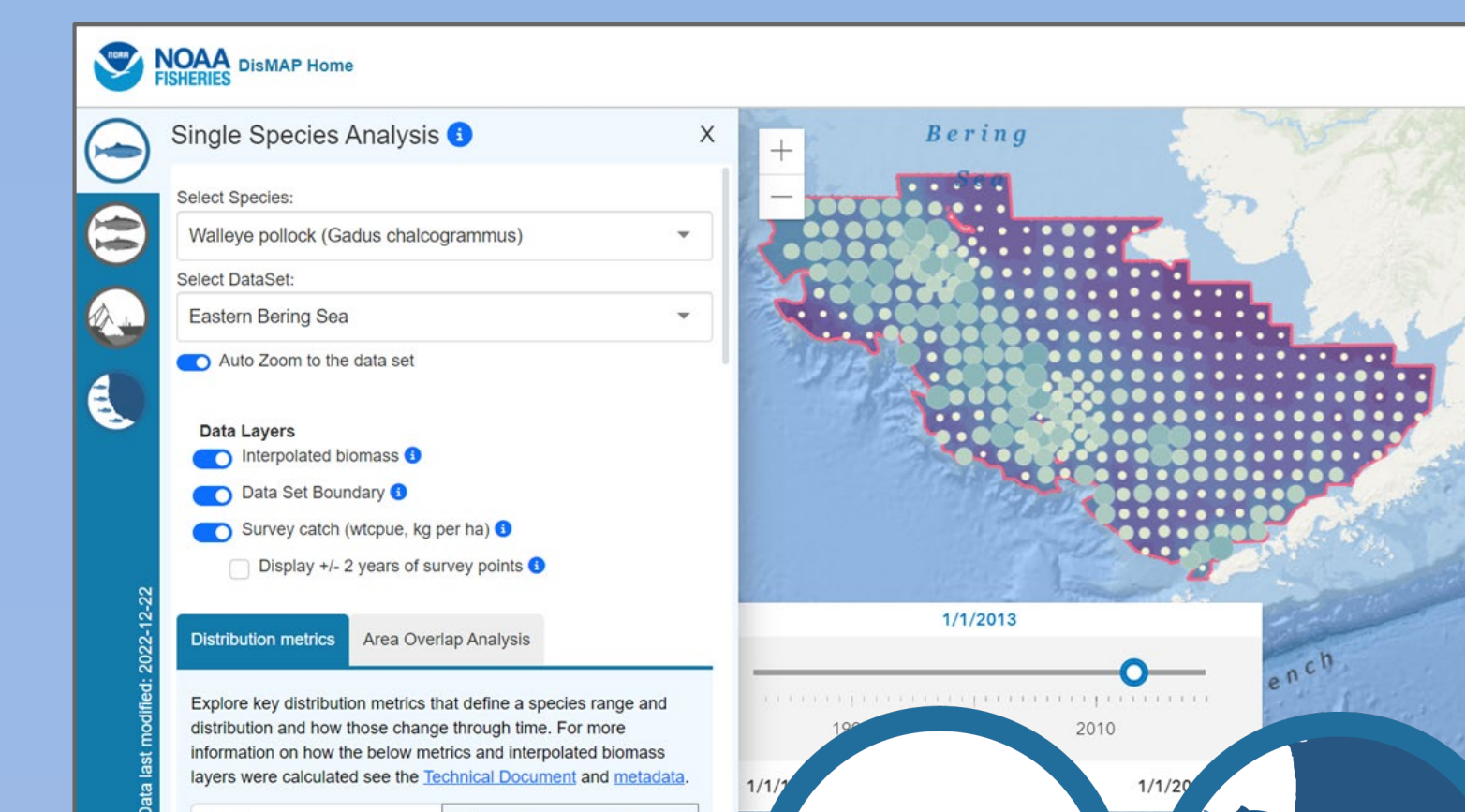


{akgfmmaps} R package

## Distribution Mapping and Analysis Portal (DisMAP)

<https://apps-st.fisheries.noaa.gov/dismap>  
Explore species distribution, other metrics, and time series for many surveys conducted by NOAA Fisheries.

- **Single species analyses**
- **Regional analyses**
- **Port Availability (coming soon!)**
- **Multispecies analyses (coming soon!)**



DisMAP

## Data Reports, Community Highlights, and Presentations

<https://www.fisheries.noaa.gov/contact/groundfish-assessment-program>

Find official catch estimates, environmental summaries, and other survey findings.

- **Data Reports**
- **North Pacific Groundfish Plan Team**
- **Strait Science Talks and Community Highlights** through Alaska Sea Grant and the University of Alaska Fairbanks



Groundfish Assessment Program



Plan teams presentations



Strait Science presentations

## Follow Us During the Survey!

<https://www.fisheries.noaa.gov/alaska/science-data/bottom-trawl-survey-temperature-maps>

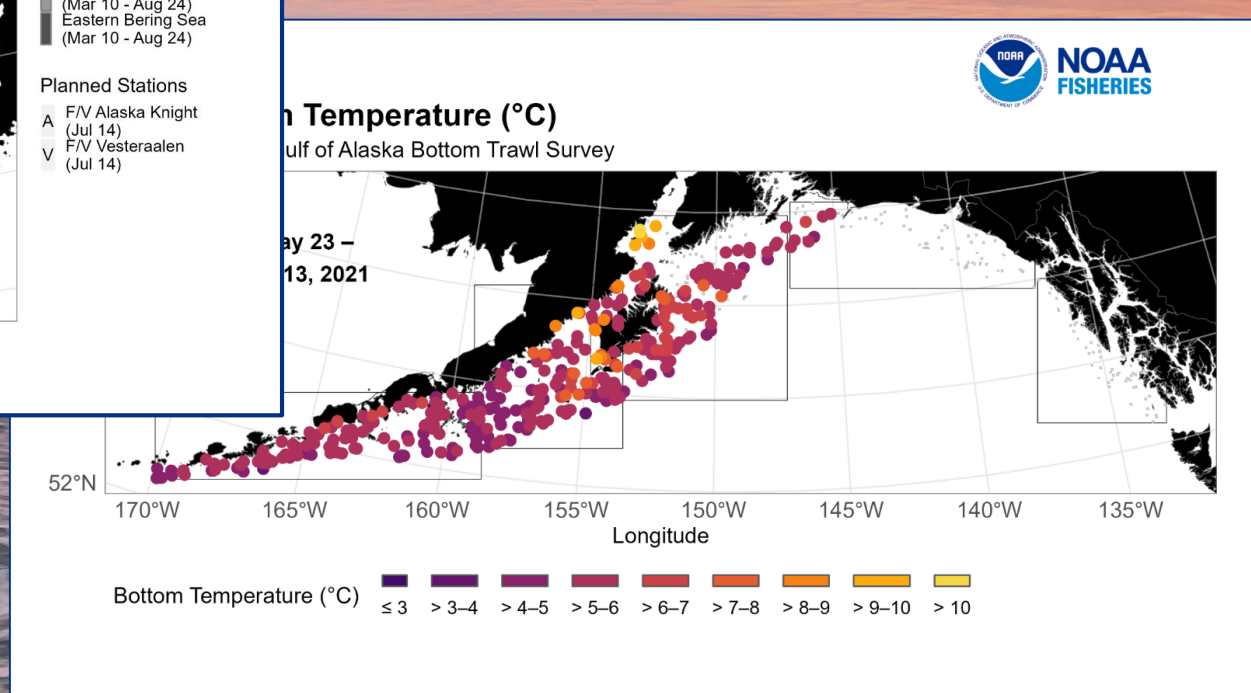
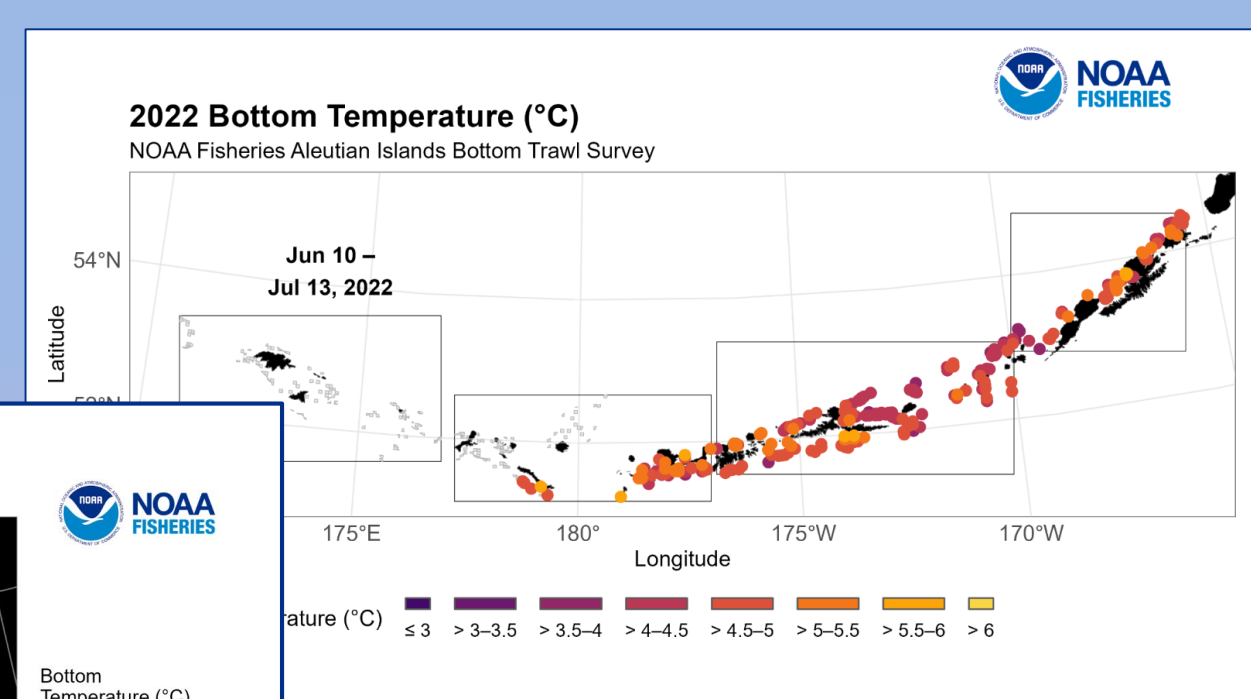
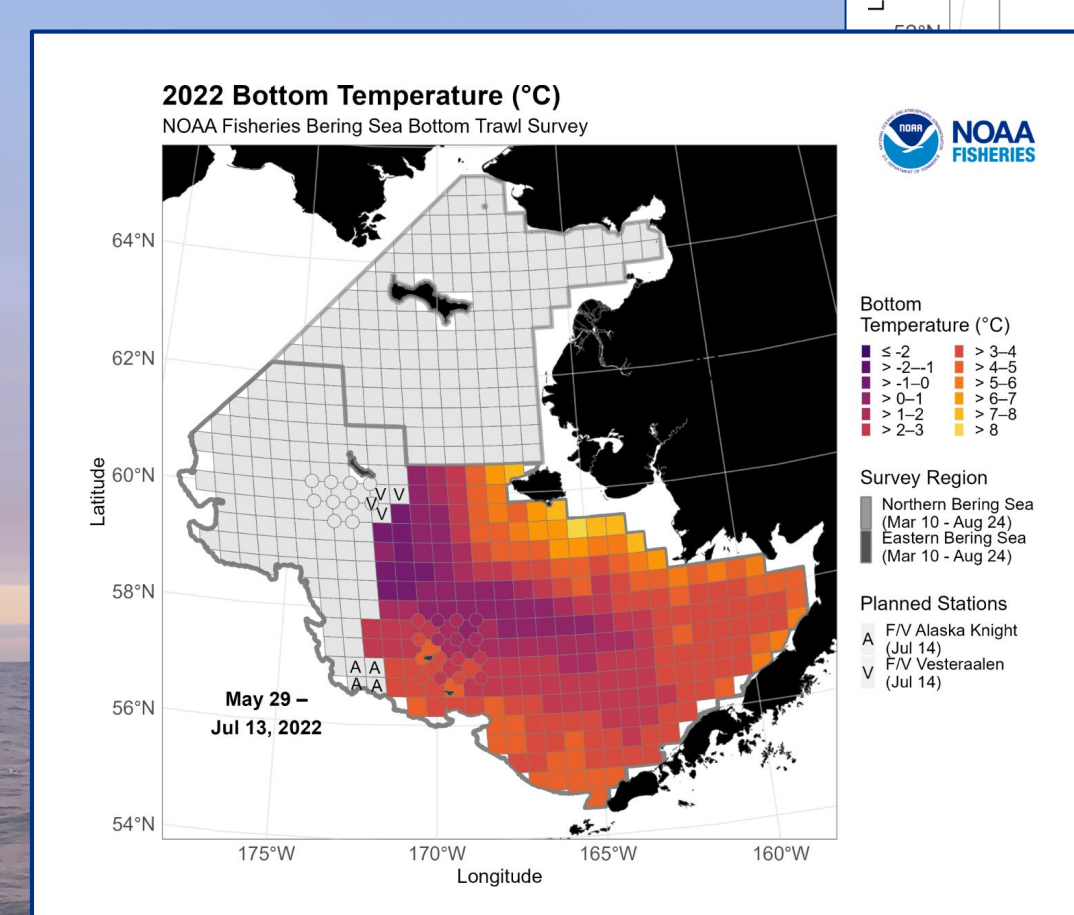
See survey progress, planned stations, and bottom temperatures at each station during the survey. Plots are updated every business day.

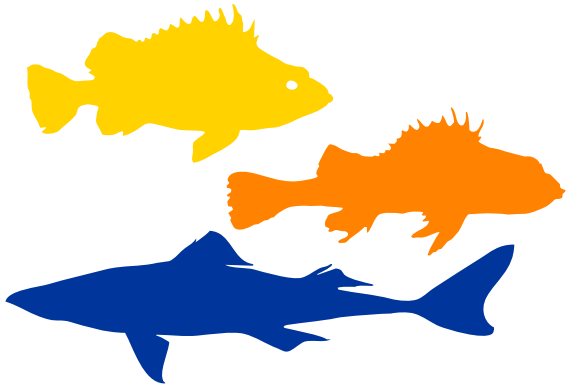


Temperature and progress maps

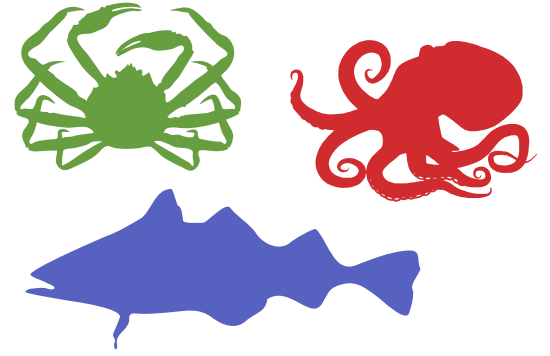


Photos from the field





Groundfish Assessment Program



Plan teams presentations



Strait Science presentations



FOSS data portal



**NOAA**  
FISHERIES



Temperature and progress maps



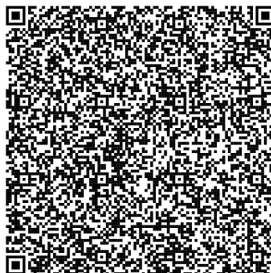
Photos from the field



DisMAP



Submit data requests through GitHub



Submit data requests through email



GAP products GitHub org



{coldpool} R package



{akgfmmaps} R package



{akfishcondition} R package

emily.markowitz@noaa.gov  
GitHub @emilymarkowitz-noaa @afsc-gap-products